

# Lawrence County Annual Report

## 2022



## Resource Areas Serving Lawrence County

### 4-H & Youth

- In-School Clubs
- Horse Club
- Livestock Club
- Sewing Club
- Chick Chain Club
- Robotics Club
- WHEP
- Archery
- Enrichment Programs
- Pig Squeal Club
- Rabbit Project
- TechChangemakers



## Lawrence County Educational Events

- Lawrence County Torchbearers Leadership Program
- Beef Quality Assurance Certification Meeting
- Farm City Week
- Forestry Career Day
- ServSafe for Food Service
- Plant Propagation
- Master Gardeners
- Floral Design Workshop
- At Home Beekeeping Series (Online)
- Beekeeping
- Invasive Plant Management
- Restricted-Use Pesticide Licensing
- Local Growers Permits
- Senior Farmers Market Nutrition Program
- Diabetes Management Programming
- Wild Pig Management
- Pizza Farm for Third-Graders
- Farm City Activities
- Senior Nutrition Center Programming
- Precision Agriculture
- Youth Livestock Programming



### Agriculture

- Home Grounds
- Commercial Ag
- Agronomic Crops
- Livestock and Poultry
- Food Safety & Quality

### Family & Health

- Money Management
- Nutrition Education

### Natural Resources

- Wildlife/Forestry
- Pond Management

### Economic Development

- Workforce Development
- Job Skills
- Community Development

# Alabama Cooperative Extension System

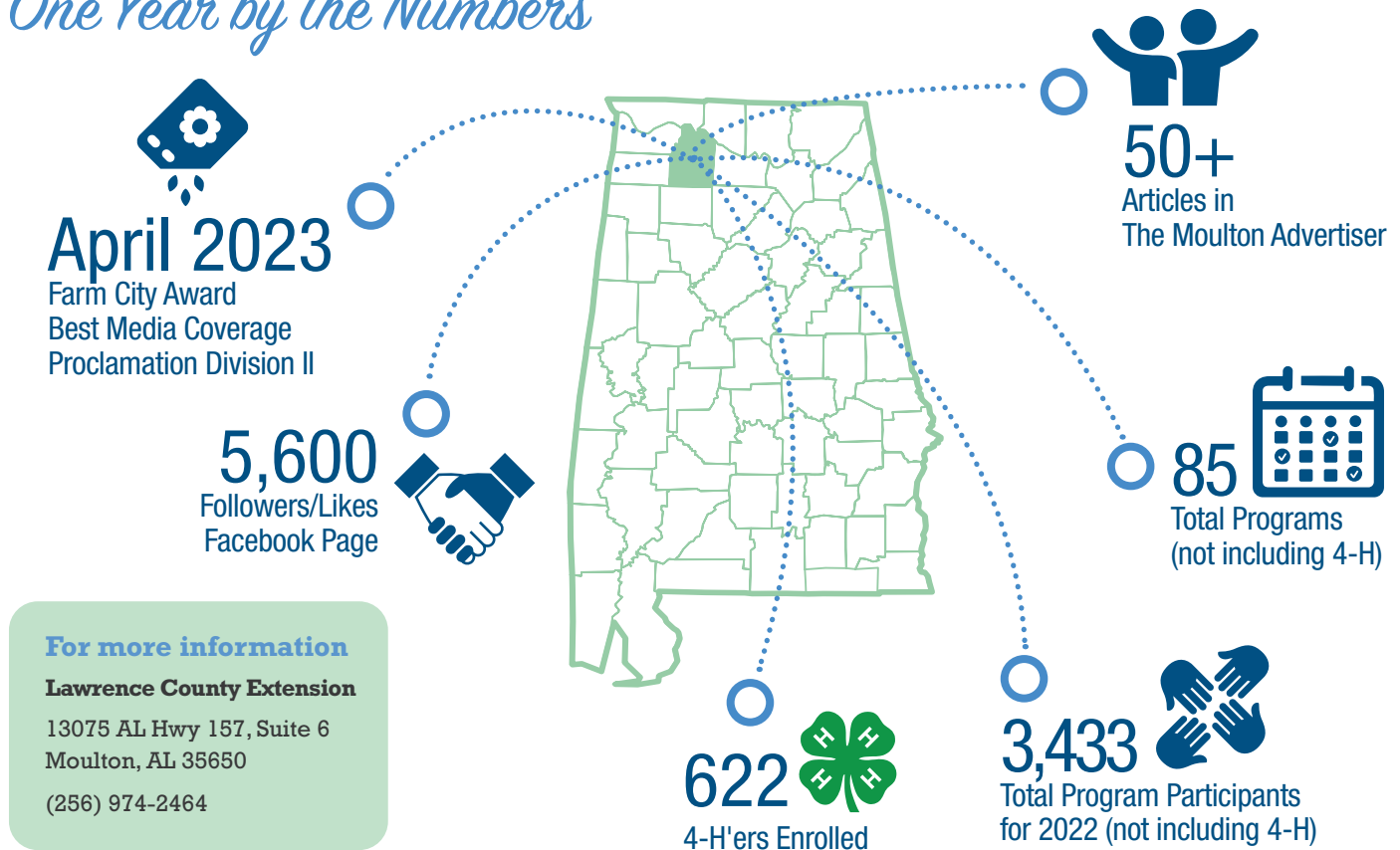
## Ongoing Partnerships & Community Education Outreach

- Lawrence County Commission
- Lawrence County Industrial Board
- Mountain Lakes and Valleys RC&D
- Lawrence County School System
- The Moulton Advertiser
- Lawrence County Farmers Market
- Town Creek Library
- Lawrence County Library
- Christian School
- Hatton Senior Center
- Speake Senior Center
- North Courtland Senior Center
- Town Creek Senior Center
- Lawrence County Chamber of Commerce
- Lawrence County Cattleman's Association
- USDA-NRCS
- USDA-FCS
- Lawrence County Conservation District
- Lawrence County Farmers Federation
- Alabama Department of Public Health
- Alabama Department of Agriculture and Industries
- Alabama Forestry Commission
- United Way of Lawrence County
- COC The Kitchen
- Good Samaritan
- Lawrence County Rotary Club
- Moulton Lions Club
- USDA Forest Service—Bankhead Ranger District
- Lawrence County Natural Resource Council
- Lawrence County History and Preservation Society
- Oakville Indian Mounds and Education Center
- Alabama Forestry Commission
- Alabama Forestry Association
- Alabama Forest Landowners Association
- Pleasant Grove Baptist Church
- Community Baptist Church
- Moulton Church of Christ
- Freeman Tabernacle Baptist Church
- Tennessee Valley Beekeepers Association
- Lawrence County Master Gardener Association

## Increasing Quality of Life for Alabamians with Research-Based Information

- 4-H'ers are four times more likely to give back to their communities and two times more likely to make healthy choices.

## One Year by the Numbers



### For more information

#### Lawrence County Extension

13075 AL Hwy 157, Suite 6  
Moulton, AL 35650  
(256) 974-2464

Alabama Extension is an equal opportunity educator, employer, and provider. If you need a reasonable accommodation or language access services, contact ACES Human Resources at [aceshr@aces.edu](mailto:aceshr@aces.edu) or (334) 844-5531. **New August 2023, ACES-2741**

© 2023 by the Alabama Cooperative Extension System. All rights reserved.

[www.aces.edu](http://www.aces.edu)