

Barbour County Annual Report

2022



Resource Areas Serving Barbour County



4-H & Youth

- In-School Clubs
- Adventurers Club
- Forestry Team
- Sewing Club
- Chick Chain Club
- RiverKids
- WHEP
- Archery
- Enrichment Programs
- Pig Squeal Club

Agriculture

- Home Grounds
- Commercial Ag
- Agronomic Crops
- Livestock and Poultry

Family & Health

- Food Safety & Quality
- Money Management
- Nutrition Education

Natural Resources

- Wildlife/Forestry
- Pond Management

Economic Development

- Workforce Development
- Job Skills
- Community Development

Barbour County Educational Events

- ServSafe for Food Service/
Cottage Food Safety
Certificate Course
- Eat Smart Be Active/Today's Mom
- Master Gardeners
- Virtual Programming
- Invasive Plant Management
- Farm Financial Management
- Filing for Success Series
- Aquatic Weeds
- Tree Identification
- Successful Aging
- Personal Finance Programs
- Hometown Hospitality -
Customer Service Training
- Restricted-Use Pesticide
Licensing
- Local Growers Permits
- Senior Farmers Market Nutrition
Voucher Program
- Nutrition Programs
- Healthy Living Programs
- Estate Planning
- Cotton Production Meetings
- Beef Cattle Production Meetings
- Equine Production Meetings
- Small Ruminant Production
Meetings
- Hay Production Meetings
- Poultry Production Meetings
- Food Preparation
- Identity Theft Programs
- Plasticulture and Drip Irrigation
- High Tunnel Programs
- Gardening Programs
- Food Preservation
- Vegetable Production Meetings
- Fruit Production Meetings

www.aces.edu

Alabama Cooperative Extension System

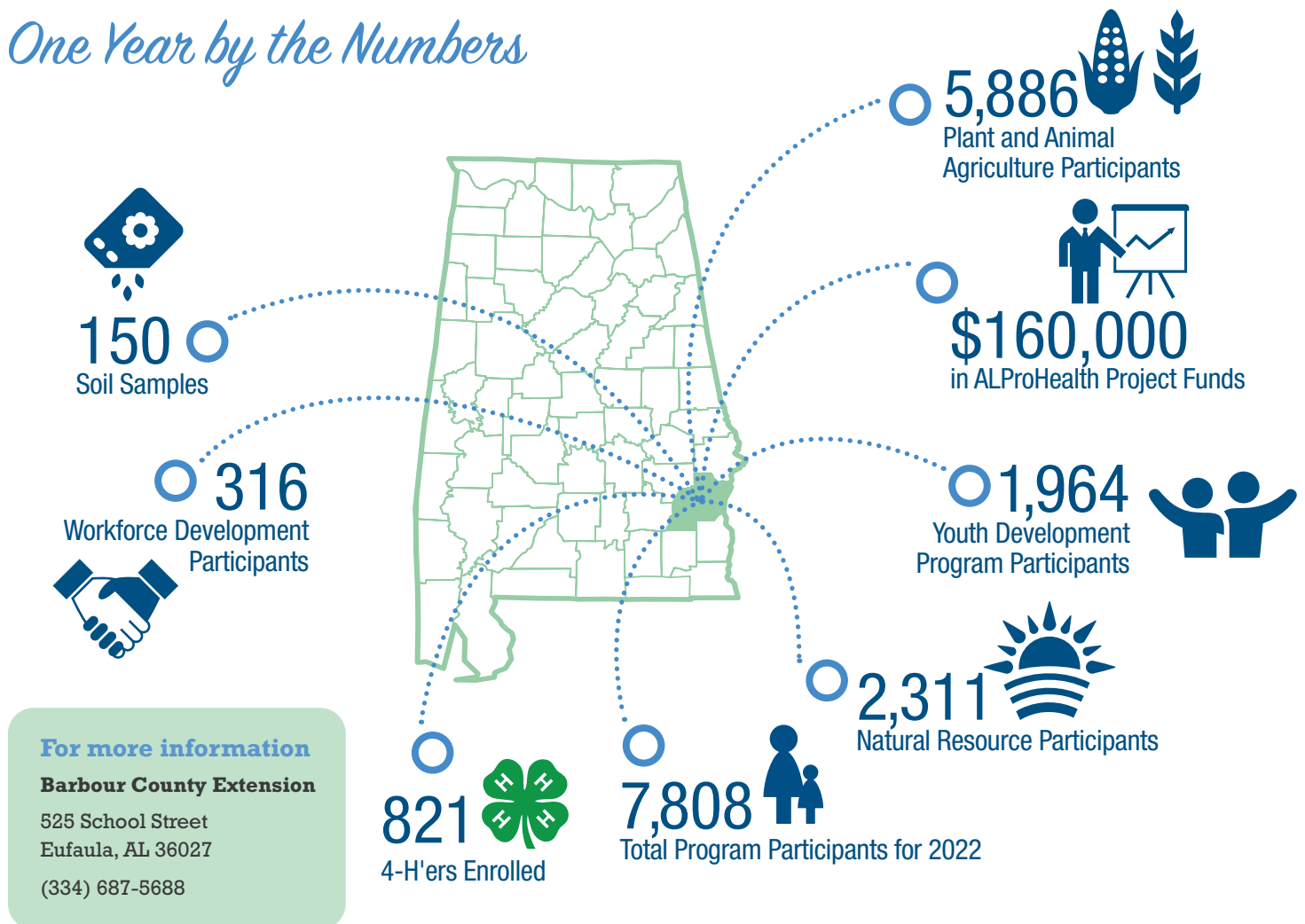
Ongoing Partnerships & Community Education Outreach

- Barbour County Commission
- Wiregrass RC&D
- Barbour County Schools
- Eufaula City Schools
- Eufaula Farmers Market
- Eufaula Carnegie Library
- The Lakeside School
- Jaxon Life Senior Center
- Clio Senior Center
- Eufaula Barbour Chamber of Commerce
- Barbour County Cattlemen's Association
- USDA–Natural Resources Conservation Service
- USDA–Farm Service Agency
- Barbour County Water Conservation District
- Barbour County Farmers Federation
- City of Clayton
- City of Eufaula
- Alabama Department of Public Health
- Alabama Department of Ag and Industries
- Alabama Forestry Commission
- Barbour County Management Area
- Medical Center Barbour
- Friends of Lake Eufaula
- NAACP
- Boys and Girls Club of Lake Eufaula
- Wiregrass United Way

Increasing Quality of Life for Alabamians with Research-Based Information

- 4-H'ers are four times more likely to give back to their communities and two times more likely to make healthy choices.

One Year by the Numbers



Alabama Extension is an equal opportunity educator, employer, and provider. If you need a reasonable accommodation or language access services, contact ACES Human Resources at aceshr@aces.edu or (334) 844-5531. **New June 2023, ACES-2734**

© 2023 by the Alabama Cooperative Extension System. All rights reserved.

www.aces.edu