

Etowah County Annual Report

2022



Resource Areas Serving Etowah County



4-H & Youth

- Summer Camp
- In School Clubs with STEM Curriculum
- KIND Homeschool Club
- Pathways Homeschool Club
- Alabama Water Watch
- Archery Club
- Fiber Arts Club
- Forestry and Wildlife Club
- Tech Change Makers
- Fur and Feathers Club
- Horse Club
- Youth Council

Agriculture

- Home Grounds
- Commercial Ag
- Agronomic Crops
- Livestock and Poultry

Family & Health

- Food Safety
- Money Management
- Nutrition Education

Natural Resources

- Wildlife
- Pond Management

Economic Development

- Workforce Development
- Job Skills
- Tourism
- Community Development

Etowah County Educational Events

- ServSafe Food Safety/Cottage Foods Permitting Program
- Eat Smart Be Active/Today's Mom
- Master Gardeners
- Raised Bed Gardens for Underserved Audiences
- Virtual Programming
- Job Success – Industry Employability Skills Training
- Workforce Academy
- Hometown Hospitality—Customer Service Training
- Alabama Department of Agriculture
 - Private Pesticide License Training and Certification
- Local Growers Permits
- Nutrition Programs
- DEEP (Diabetes Education and Empowerment Program)
- Walking Club
- Restricted Use Pesticide Classes
- Tomato Taste Off—Tomato Week
- Beef Production and Herd Management Workshop
- Disaster Preparedness Events
- Financial Management and Budgeting Classes
- Alabama Watershed Stewards Program

Alabama Cooperative Extension System

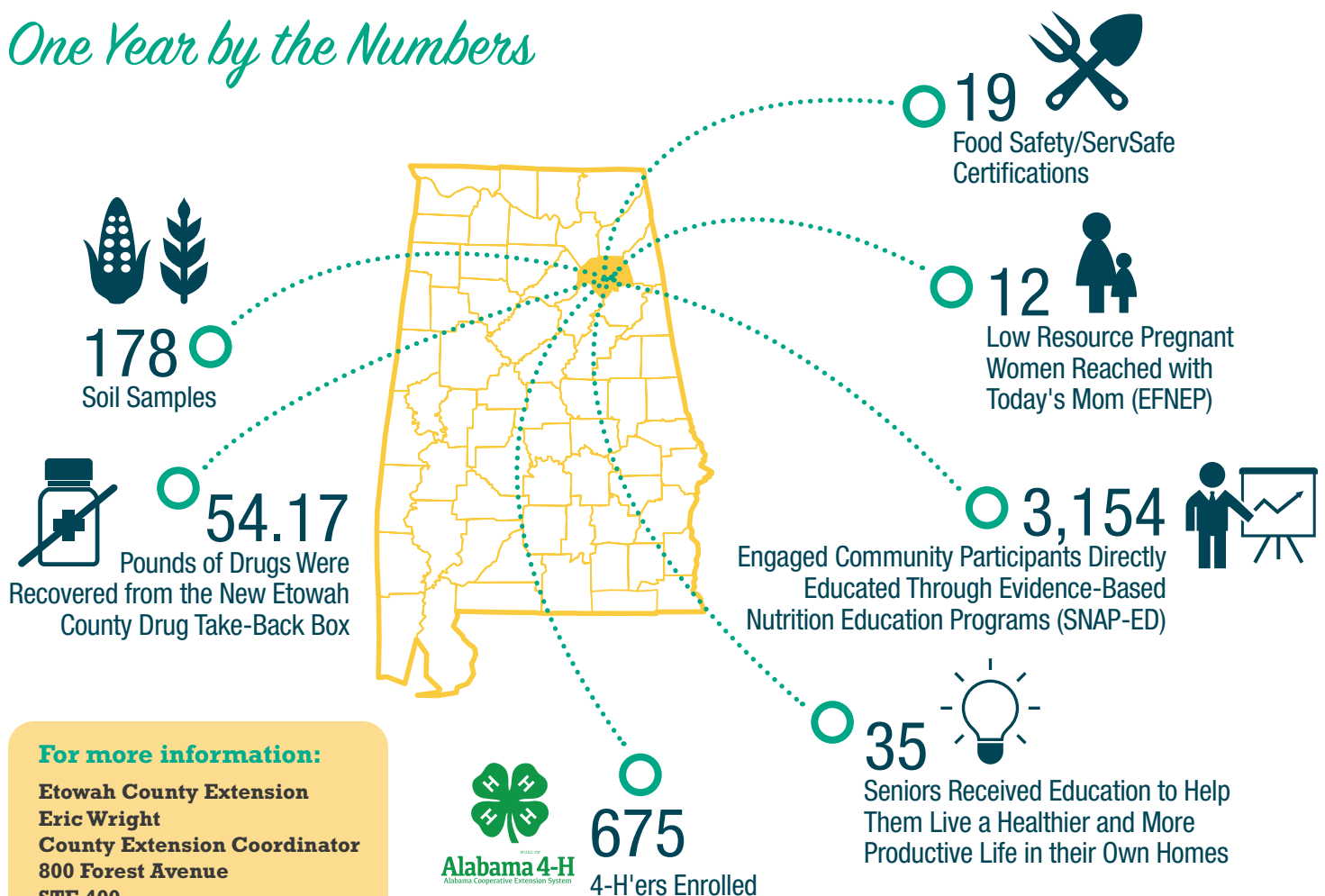
Ongoing Partnerships & Community Education Outreach

- Etowah County Commission
- Coosa Valley RC&D
- Greater Gadsden Housing Authority
- Gadsden-Etowah EMA
- Family Success Center
- Downtown Gadsden Inc.
- Gadsden State Community College
- United Way of Etowah County
- Gadsden City Schools
- Etowah County Schools
- 5th Street Farmers Market
- Gadsden Public Library
- Greater Gadsden Tourism
- SPAN of Etowah County
- Gadsden Job Corps
- Gadsden–Etowah Chamber of Commerce
- Etowah County Farmers Federation
- Annual Community Health Fairs
- City of Gadsden
- Sardis Senior Center
- Rapha Treatment Center
- CED Fellowship House

Increasing Quality of Life for Alabamians with Research-Based Information

- 4-H'ers are four times more likely to give back to their communities and two times more likely to make healthy choices.
- Through our SNAP-Ed efforts, 82 changes were adopted—policy, systems, and environmental changes were made in Etowah County. These focus on the underlying systems that create the structures in which we work, live, and play.

One Year by the Numbers



Alabama Extension is an equal opportunity educator, employer, and provider. If you need a reasonable accommodation or language access services, contact ACES Human Resources at aceshr@aces.edu or (334) 844-5531. **New February 2023, ACES-2648**

© 2023 by the Alabama Cooperative Extension System. All rights reserved.

www.aces.edu