

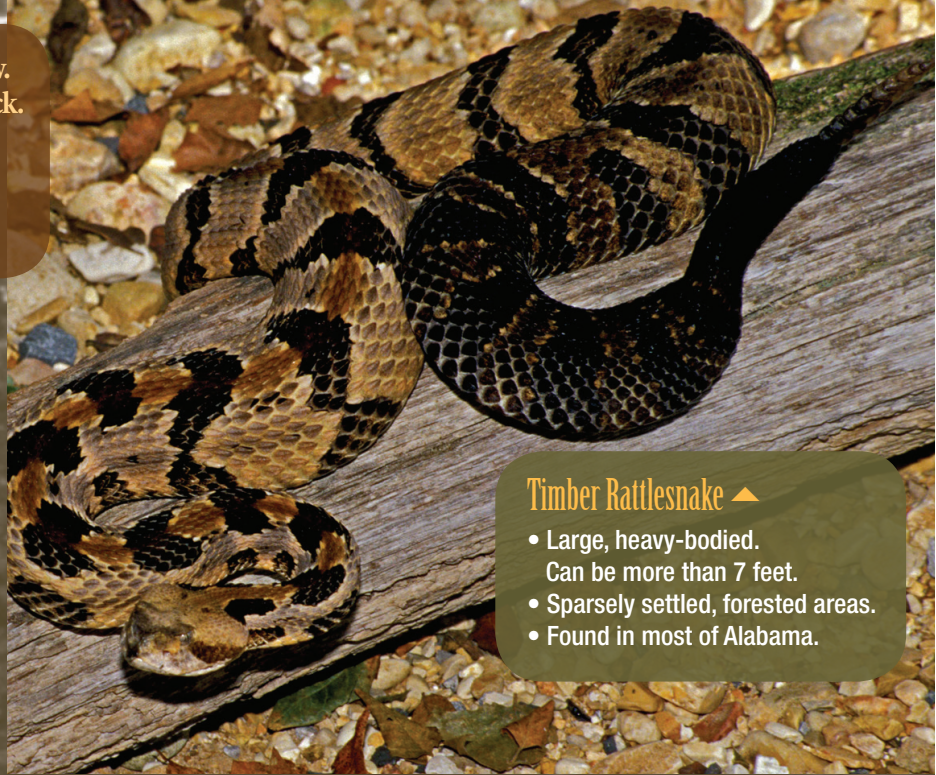
Coral Snake ▶

- Slender with maximum size of about 3½ feet.
- Mostly in lower coastal plain and spend much time underground in loose soils.
- Top of head and nose black. Typical body markings are complete bands of alternating red and black, separated by narrow yellow rings
- Bite can be deadly.
- Three nonvenomous snakes—scarletsnake, scarlet kingsnake, red milksnake—have markings similar to the coral snake, but on these, the red and black bands touch, not the red and yellow.
- The coral snake’s black head and nose distinguish it from the nonvenomous mimics.



Red on yellow, kill a fellow.
Red on black, friend of Jack.
Black on snout, look out!

- If you see a snake with red, yellow, and black bands, leave it alone!



Timber Rattlesnake ▲

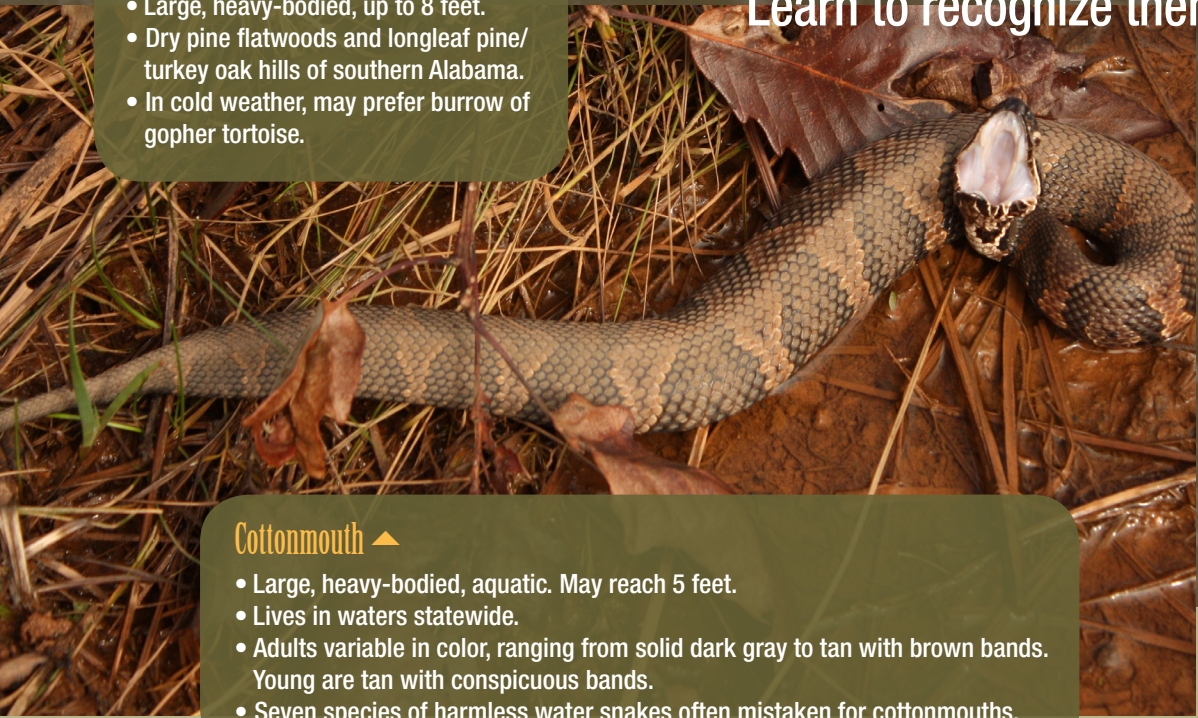
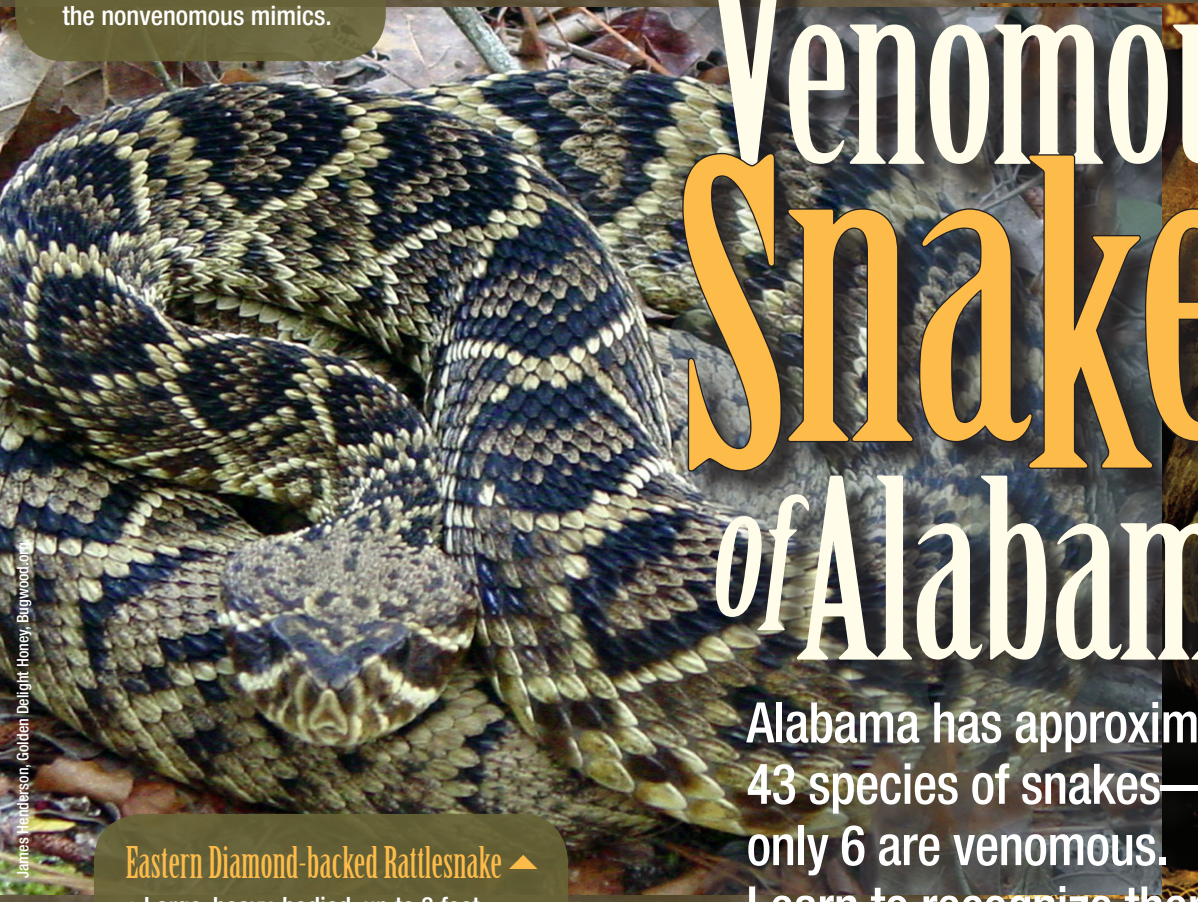
- Large, heavy-bodied. Can be more than 7 feet.
- Sparsely settled, forested areas.
- Found in most of Alabama.

Venomous Snakes of Alabama

Alabama has approximately 43 species of snakes—only 6 are venomous. Learn to recognize them.

Eastern Diamond-backed Rattlesnake ▲

- Large, heavy-bodied, up to 8 feet.
- Dry pine flatwoods and longleaf pine/turkey oak hills of southern Alabama.
- In cold weather, may prefer burrow of gopher tortoise.

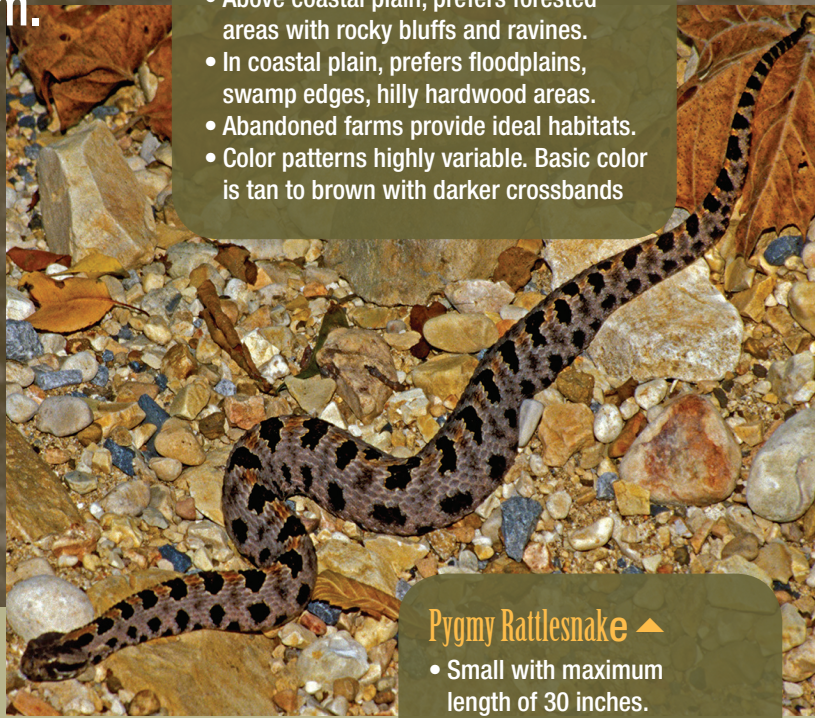
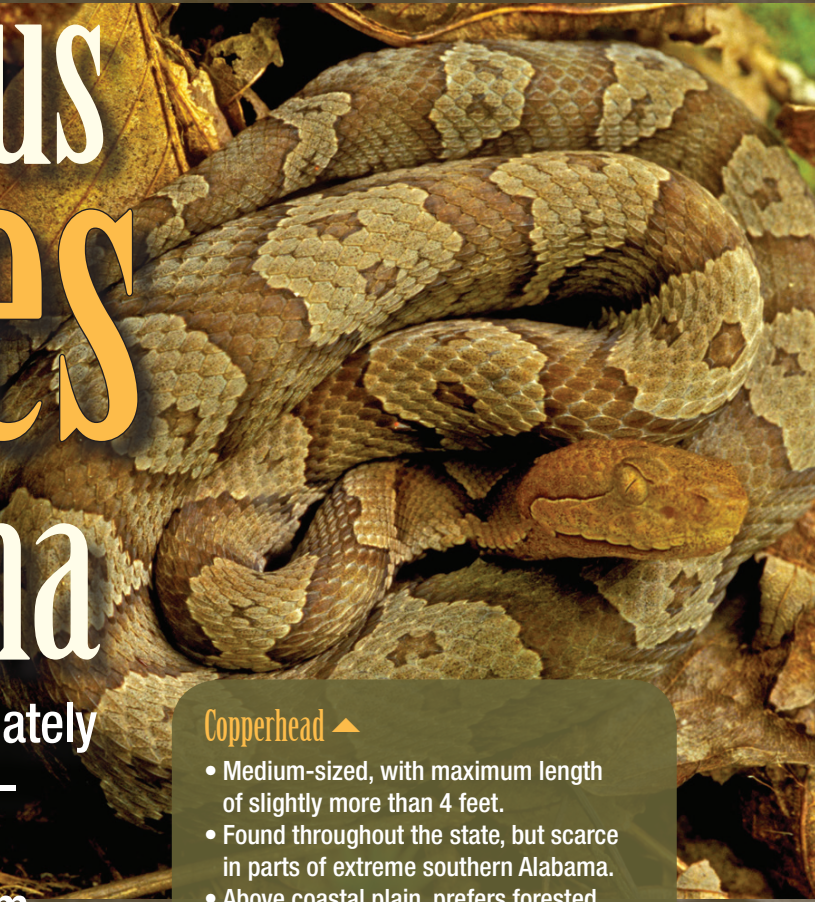


Cottonmouth ▲

- Large, heavy-bodied, aquatic. May reach 5 feet.
- Lives in waters statewide.
- Adults variable in color, ranging from solid dark gray to tan with brown bands. Young are tan with conspicuous bands.
- Seven species of harmless water snakes often mistaken for cottonmouths.

Copperhead ▲

- Medium-sized, with maximum length of slightly more than 4 feet.
- Found throughout the state, but scarce in parts of extreme southern Alabama.
- Above coastal plain, prefers forested areas with rocky bluffs and ravines.
- In coastal plain, prefers floodplains, swamp edges, hilly hardwood areas.
- Abandoned farms provide ideal habitats.
- Color patterns highly variable. Basic color is tan to brown with darker crossbands



Pygmy Rattlesnake ▲

- Small with maximum length of 30 inches.
- Found throughout the state.
- Seldom seen except in late summer.
- Small rattle can barely be heard more than 3 feet away.

PIT VIPERS

OTHER SNAKES



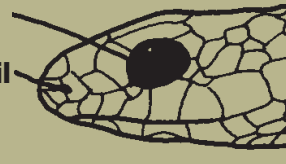
Flat Triangular



Head Usually Oval
Elongated Head



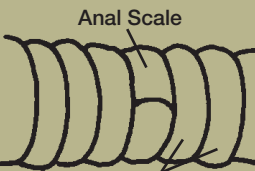
Facial Pit;
Vertical Pupil



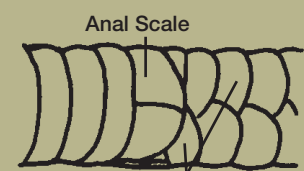
No Pit;
Round Pupil

PIT VIPERS

OTHER SNAKES



Single Row
of Scales
Under Tail



Double Row
of Scales
Under Tail

Five of the six venomous snakes in Alabama are pit vipers. They have pits on both sides of the face between the eye and nostril and single rows of scales under tail. The coral snake is not a pit viper and has a small head, round pupils, and a slender body. Nonvenomous snakes in Alabama also have round pupils and small heads.

For more information about snakes and other forestry, wildlife, or natural resources activities in Alabama, contact your nearest county Extension office.



Alabama A&M and Auburn Universities

www.aces.edu