

Installation of Trees in the Landscape

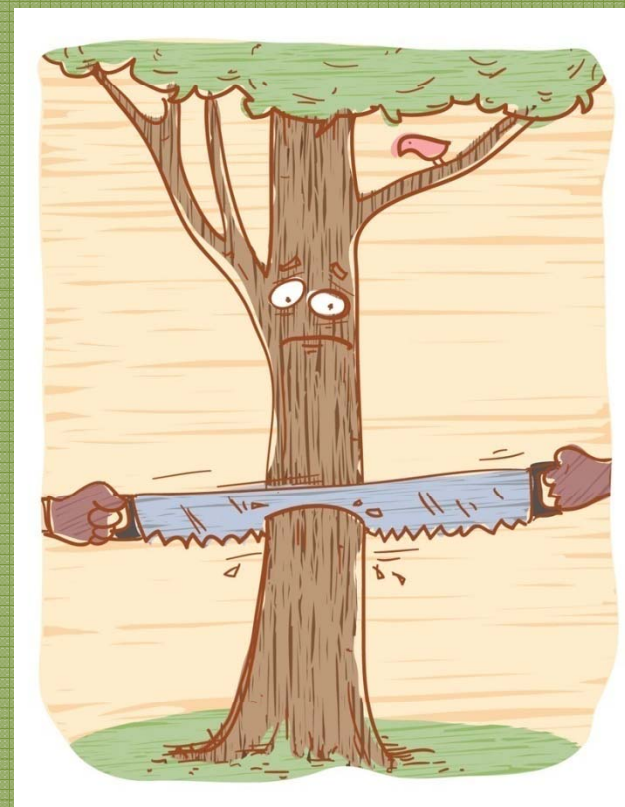
Tony A. Glover, County Extension Coordinator
– Cullman County



Original presentation combined from Auburn University, University of Georgia and Florida (special thanks to: Dr. Edward F. Gilman and Traci Partin of IFAS)

Landscape Tree Facts

- Trees growing in commercial settings live an average of 13 years
- Trees in residential areas average 37 years
- Trees in rural, undisturbed sites average 150 years
- Of course some species naturally live longer than others but why the big disparity between locations?



Lots of Reasons

- Compacted soils
- No topsoil
- Limited space for roots
- Improper staking
- Mechanical injuries
- Construction
- Pedestrian and vehicle abuse
- Adding/Removing soil
- Improper planting
- Over-pruning
- Improper fertilization



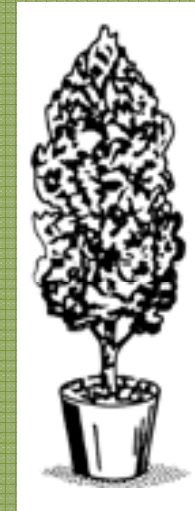
Types of Tree Stock



Bare-Root



Ball and Burlap (B&B)



Container

Planting and establishing trees



Steps for proper planting

1. Look up for wires/lights
2. Dig shallow/wide hole
3. Find the top-most root and treat root defects
4. Place tree in hole
5. Position top root 1-2 inches above landscape soil
6. Straighten tree
7. Remove synthetic materials
8. Add backfill soil and firm the root ball
9. Add mulch
10. Stake and prune if needed



What's wrong with this picture?