

How Does the Program Work?

Families are contacted about their interest in participating. Regular weekly session visits are arranged. Parent and child have their sessions aboard a van, renovated to be a classroom-on-wheels.

The parent and B.e.e. educator discuss school readiness and parenting information. The B.e.e. educator leads the child in structured play and learning activities.



How Do I Enroll?



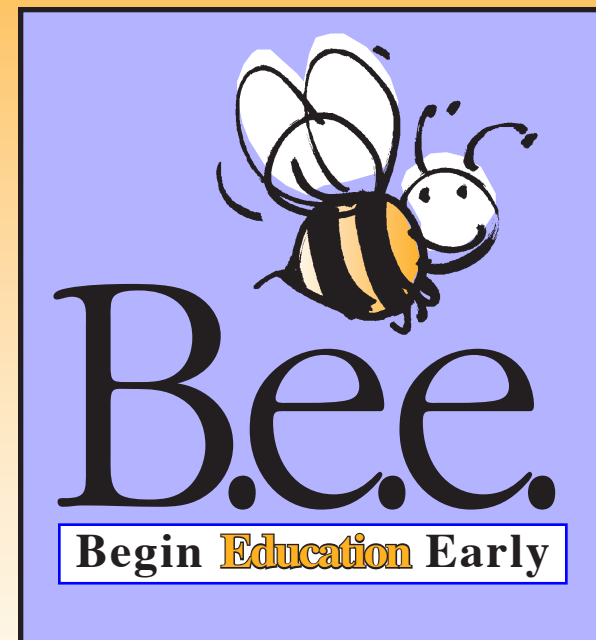
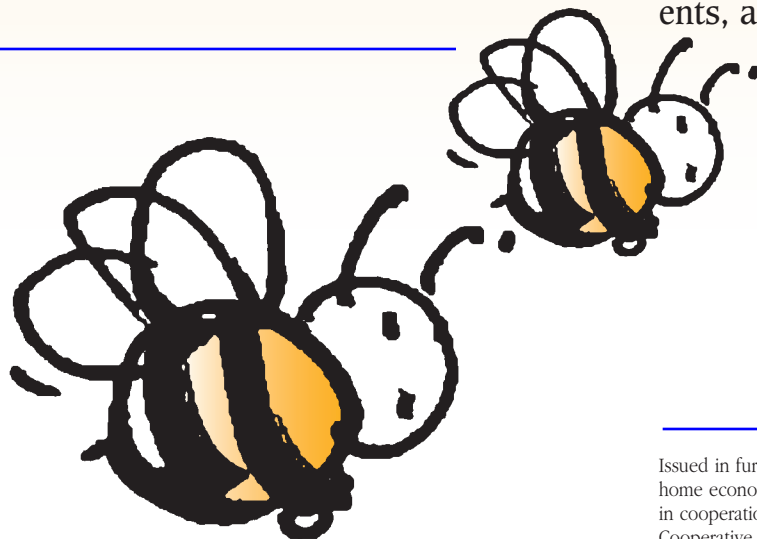
Call or visit your county Extension office, and ask to talk to the agent in charge of the B.e.e. program in your county.



We appreciate the Children's Trust Fund of Alabama for funding that supports the B.e.e. Program. Look for more information on strengthening children, youth, families, parents, and communities on the Web at the following:

www.aces.edu

www.cyfernet.org



Strengthening Rural Alabama Families

Helping parents have a positive impact on the future success of their children.

- School readiness and parenting information for adults
- Preliteracy activities for young children

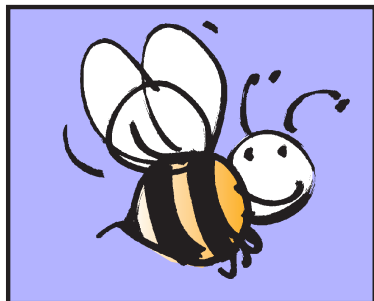
Issued in furtherance of Cooperative Extension work in agriculture and home economics, Acts of May 8 and June 30, 1914, and other related acts, in cooperation with the U.S. Department of Agriculture. The Alabama Cooperative Extension System (Alabama A&M University and Auburn University) offers educational programs, materials, and equal opportunity employment to all people without regard to race, color, national origin, religion, sex, age, veteran status, or disability. 1.5 M, New Nov 2006, HE-834

© 2006 by the Alabama Cooperative Extension System. All rights reserved

Success in life begins with a good education. Parents who know how children learn in their first five years are better able to prepare them to do well in school.

What Are the Goals of the B.e.e. Program?

- Parents will learn how to help their young children get ready to learn.
- Children will enjoy a stimulating learning environment and one-on-one attention.
- Parents will learn new skills in using positive discipline strategies with their children.
- Parents will develop new skills to support and encourage children's intellectual and social development.



What Does the B.e.e. Program Do?

In a classroom-on-wheels, you will learn what you can do to prepare your child for school. At the same time, your young child will take part in hands-on, structured activities to work on social, language, and learning skills.

Who Can Enroll in the B.e.e. Program?

- Families with limited resources
- Families with limited access to parenting or early childhood education

One parent or adult caregiver and a related child between the ages of 2 and 5 years enroll and participate in the program together.

How Long Does the Program Last?

For 10 weeks, your B.e.e. educator will spend up to 60 minutes each week with you and your child.

Why Begin Education Early?

Before children enter school, they must learn and be able to do many things in order to succeed. Parents are children's first and most important teachers. The quality of care and involvement parents provide in the early years is critical to children's readiness to learn once they are old enough to begin school.

The B.e.e. Program shares the best information available about what children need and how parents and others who care for young children can help them succeed at learning.

