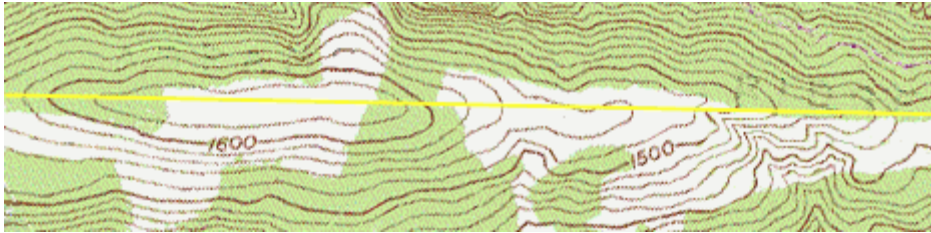
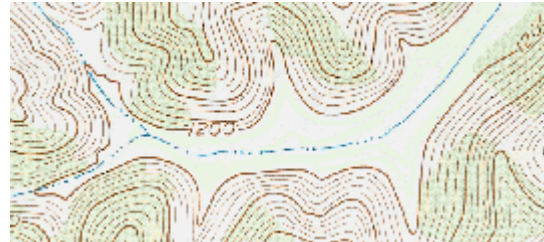
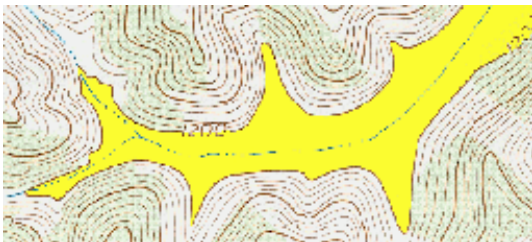


Map Symbols

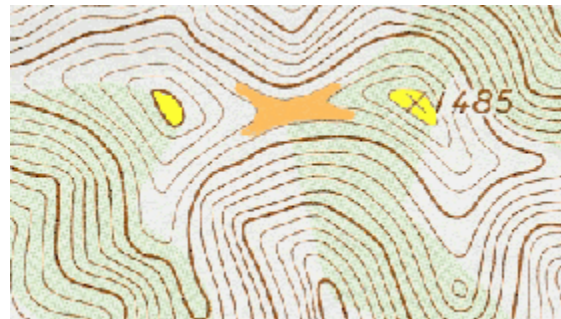
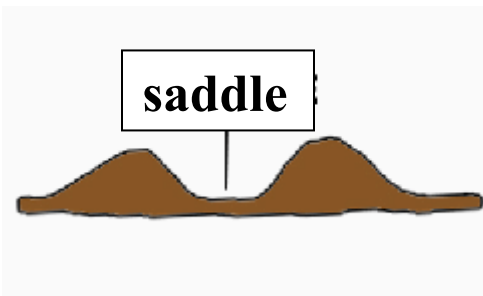


ridge



valley

peak





depression



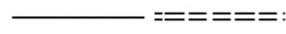
wooded area



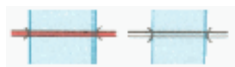
open area



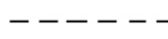
primary road



unimproved road



bridge



trail



school



tank



church



quarry



uninhabited building



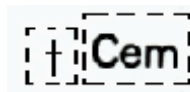
inhabited building



campground



marsh



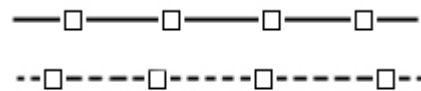
cemetery



perennial stream



intermittent stream



power line



gravel pit




spring



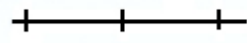
index
contour line

Heavier dark brown line normally with the elevation, such as 1500 or 2400, referenced at intervals along the line.

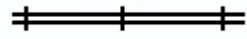


intermediate
contour line

Lighter brown lines between the indexed contour lines shown above.



railroad-
single track



railroad-
multiple track



mine tunnel