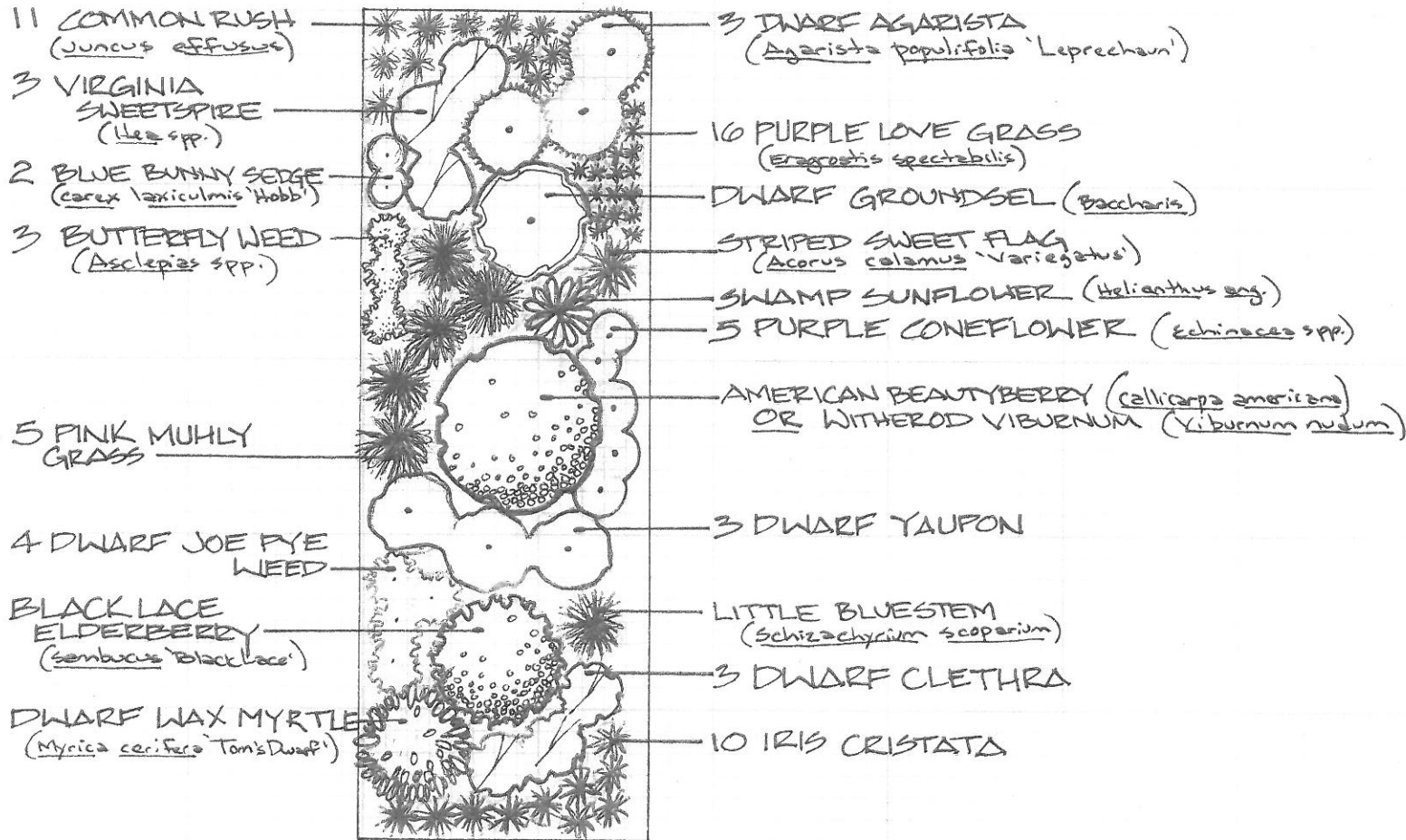


AUBURN UNIVERSITY ARBORETUM

RAIN GARDEN DEMONSTRATION 10' x 30'



- ALL NATIVE GENERA
- RECENT DWARF INTRODUCTIONS
- EXCELLENT PLANT I.D. AND USE STUDY GARDEN
(ESP. TO COMPARE JUNCUS, CAREX, MUHLLENBERGIA, SCHIZACHYRIUM, + IRIS, + ERAGROSTIS SIDE BY SIDE — AND TO SEE DWARF CULTIVARS, OTHER CULTIVARS OF COMMON STRAIGHT SPECIES)
- INTERESTING VIEWS FROM ALL SIDES
- 4 SEASONS OF INTEREST USING WOODY PLANTS AND HERBACEOUS PLANTS