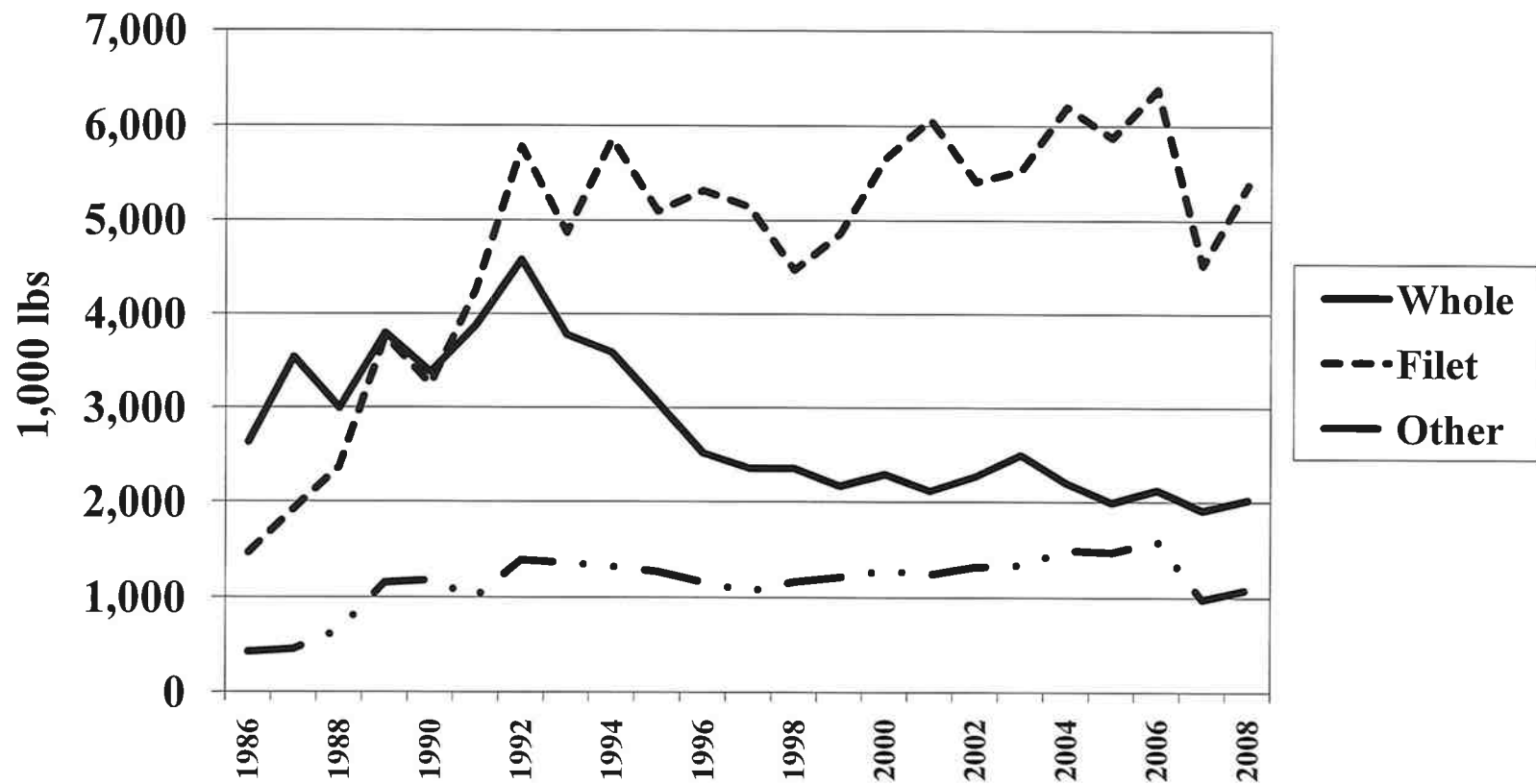


Processor Total  
Ending Inventory

# Processor Fresh Catfish Total Inventory



**Fresh Whole Catfish, Total Ending Inventory, 1,000 pounds**

<b>Month</b>	<b>1987</b>	<b>1988</b>	<b>1989</b>	<b>1990</b>	<b>1991</b>	<b>1992</b>	<b>1993</b>	<b>1994</b>	<b>1995</b>	<b>1996</b>	<b>1997</b>
<b>Jan</b>	179	312	295	303	253	353	381	270	262	262	232
<b>Feb</b>	309	362	318	382	380	335	307	345	239	294	242
<b>Mar</b>	428	261	257	232	308	627	454	342	286	221	220
<b>Apr</b>	298	211	319	405	309	479	314	251	215	218	216
<b>May</b>	289	210	321	245	317	382	296	287	219	200	201
<b>Jun</b>	285	264	300	190	268	417	313	306	282	219	195
<b>Jul</b>	323	181	315	195	330	310	247	306	375	216	186
<b>Aug</b>	269	251	381	258	328	274	340	358	304	185	190
<b>Sep</b>	312	179	336	268	444	347	375	376	254	166	184
<b>Oct</b>	361	329	406	314	396	371	240	317	264	202	168
<b>Nov</b>	294	252	302	324	285	352	225	243	190	151	138
<b>Dec</b>	190	180	245	258	322	296	287	184	166	184	151
<b>Monthly Avg lbs</b>	295	249	316	281	328	379	315	299	255	210	194
<b>Annual Pounds</b>	3,537	2,992	3,795	3,374	3,940	4,543	3,779	3,585	3,056	2,518	2,323
<b>Month</b>	<b>1998</b>	<b>1999</b>	<b>2000</b>	<b>2001</b>	<b>2002</b>	<b>2003</b>	<b>2004</b>	<b>2005</b>	<b>2006</b>	<b>2007</b>	<b>2008</b>
<b>Jan</b>	218	208	234	222	210	274	191	211	226	222	268
<b>Feb</b>	235	184	233	215	199	234	188	170	209	209	170
<b>Mar</b>	230	180	203	146	225	211	316	187	212	166	191
<b>Apr</b>	195	136	145	229	131	362	184	113	152	142	211
<b>May</b>	130	196	232	170	167	185	211	190	126	168	136
<b>Jun</b>	167	194	212	154	195	205	237	175	127	119	122
<b>Jul</b>	196	163	203	169	236	181	162	146	173	154	168
<b>Aug</b>	232	210	187	169	191	212	146	169	246	120	87
<b>Sep</b>	229	177	151	164	185	172	168	139	111	170	257
<b>Oct</b>	215	192	188	197	196	183	151	192	204	214	131
<b>Nov</b>	163	159	188	143	183	169	127	211	245	122	131
<b>Dec</b>	143	169	116	139	152	111	120	90	97	106	149
<b>Monthly Avg lbs</b>	196	181	191	176	189	208	183	166	177	159	168
<b>Annual Pounds</b>	2,353	2,168	2,292	2,117	2,270	2,499	2,201	1,993	2,128	1,912	2,021

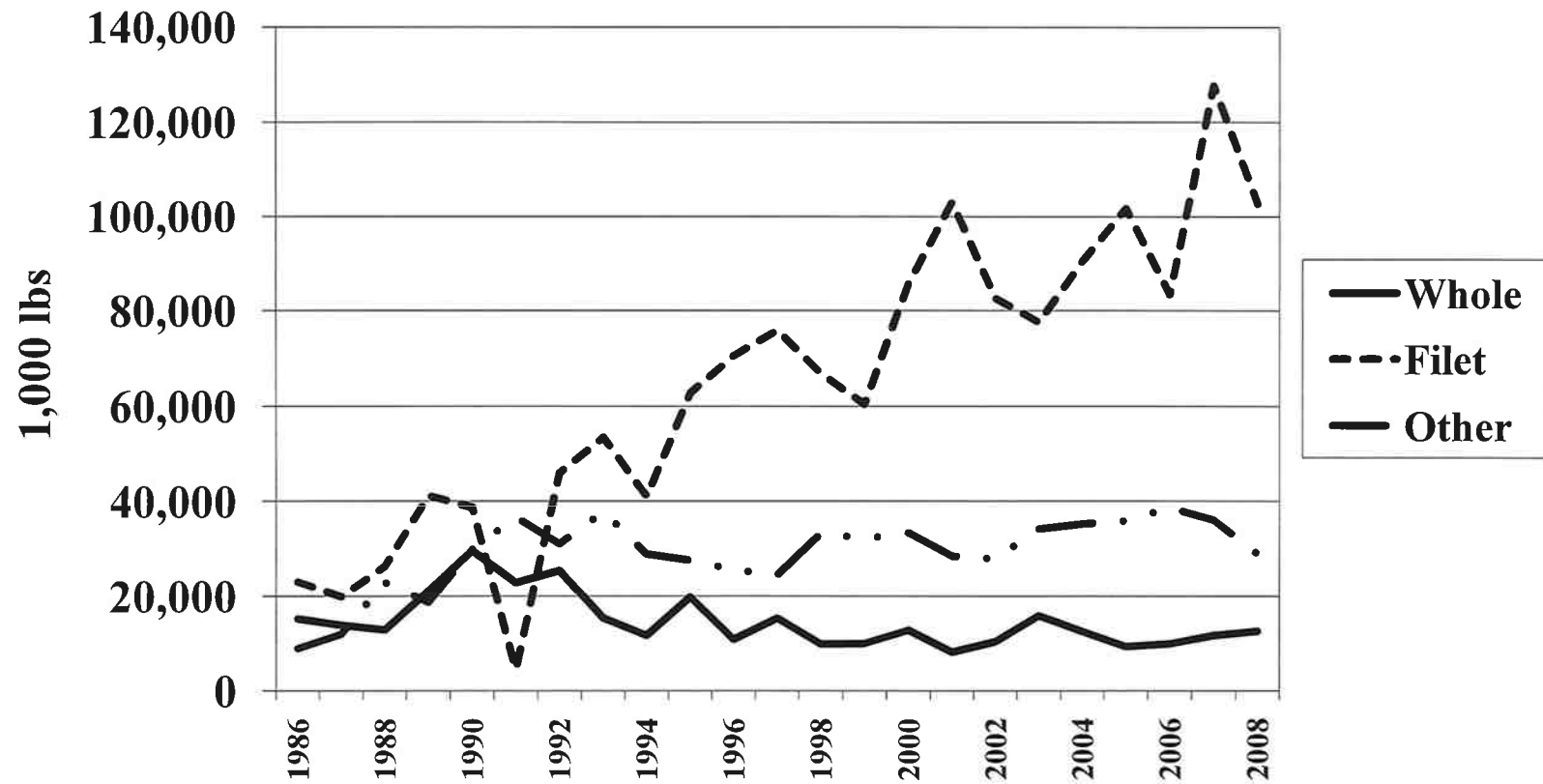
**Fresh Catfish Fillet, Ending Inventory, 1,000 pounds**

Month	1987	1988	1989	1990	1991	1992	1993	1994	1995	1996	1997
Jan	114	176	260	321	292	464	411	379	393	461	385
Feb	203	175	464	253	365	510	711	468	369	617	477
Mar	217	175	314	217	393	631	381	343	424	527	369
Apr	151	162	222	228	275	543	368	328	315	425	407
May	111	145	301	211	378	462	376	411	399	360	344
Jun	155	218	338	268	390	434	383	425	425	383	373
Jul	136	230	336	218	340	515	279	545	488	526	394
Aug	129	268	324	306	395	677	336	539	466	490	353
Sep	254	209	369	286	336	398	357	551	499	422	424
Oct	173	196	346	326	407	451	510	555	470	415	462
Nov	142	236	279	329	406	398	416	457	457	340	353
Dec	110	179	210	283	299	252	342	722	394	349	329
Monthly Avg lbs	158	197	314	271	356	478	406	477	425	443	389
Annual Pounds	1,895	2,369	3,763	3,246	4,276	5,735	4,870	5,723	5,099	5,315	4,670
Month	1998	1999	2000	2001	2002	2003	2004	2005	2006	2007	2008
Jan	418	451	460	586	551	561	507	513	622	602	519
Feb	410	420	520	536	530	420	550	520	501	442	320
Mar	391	393	494	470	474	495	552	632	363	343	474
Apr	340	348	399	520	411	445	487	368	352	240	524
May	270	336	428	453	355	408	512	510	481	427	340
Jun	330	385	448	493	407	440	579	495	472	316	334
Jul	393	391	462	516	488	442	540	482	581	364	499
Aug	484	413	578	458	477	398	530	423	652	348	344
Sep	395	494	495	559	405	581	624	463	556	318	538
Oct	380	437	591	617	498	495	490	566	687	449	468
Nov	348	392	449	404	407	505	473	531	770	398	709
Dec	313	397	336	455	411	343	357	372	347	278	311
Monthly Avg lbs	373	405	472	506	451	461	517	490	532	377	448
Annual Pounds	4,472	4,857	5,660	6,067	5,414	5,533	6,201	5,875	6,384	4,525	5,380

**Fresh Other Catfish, Total Ending Inventory, 1,000 pounds**

<b>Month</b>	<b>1987</b>	<b>1988</b>	<b>1989</b>	<b>1990</b>	<b>1991</b>	<b>1992</b>	<b>1993</b>	<b>1994</b>	<b>1995</b>	<b>1996</b>	<b>1997</b>
<b>Jan</b>	21	48	78	97	88	91	93	148	83	108	70
<b>Feb</b>	32	30	176	87	110	123	227	88	86	116	100
<b>Mar</b>	41	43	75	70	102	155	107	79	102	110	122
<b>Apr</b>	34	51	68	89	57	107	74	87	107	85	73
<b>May</b>	42	49	78	88	97	88	108	138	111	79	78
<b>Jun</b>	50	57	72	183	107	133	110	130	136	89	101
<b>Jul</b>	65	66	79	94	104	134	73	135	118	110	99
<b>Aug</b>	52	75	87	117	38	173	106	104	114	90	97
<b>Sep</b>	37	43	112	96	65	106	106	117	119	88	111
<b>Oct</b>	27	68	130	104	81	117	155	112	124	110	118
<b>Nov</b>	26	69	117	84	78	90	107	106	85	137	67
<b>Dec</b>	20	52	82	69	77	77	99	105	93	43	76
<b>Monthly Avg lbs</b>	37	54	96	98	84	116	114	112	107	97	93
<b>Annual Pounds</b>	447	651	1,154	1,178	1,004	1,394	1,365	1,349	1,278	1,165	1,112
<b>Month</b>	<b>1998</b>	<b>1999</b>	<b>2000</b>	<b>2001</b>	<b>2002</b>	<b>2003</b>	<b>2004</b>	<b>2005</b>	<b>2006</b>	<b>2007</b>	<b>2008</b>
<b>Jan</b>	99	86	105	108	132	159	138	137	174	121	115
<b>Feb</b>	105	104	141	105	120	122	128	130	126	96	51
<b>Mar</b>	145	84	91	84	83	120	159	153	121	71	93
<b>Apr</b>	177	93	70	106	105	117	128	95	99	57	91
<b>May</b>	69	102	108	87	113	68	102	124	114	99	89
<b>Jun</b>	67	88	99	95	112	80	134	114	199	72	104
<b>Jul</b>	90	97	114	88	134	137	130	117	177	88	107
<b>Aug</b>	91	117	127	107	134	96	122	144	138	38	64
<b>Sep</b>	95	125	111	156	95	117	149	105	92	84	82
<b>Oct</b>	127	120	153	115	105	117	109	139	121	98	143
<b>Nov</b>	46	109	81	78	105	121	102	131	159	98	81
<b>Dec</b>	57	94	86	117	88	89	98	89	72	59	66
<b>Monthly Avg lbs</b>	97	102	107	104	111	112	125	123	133	82	91
<b>Annual Pounds</b>	1,168	1,219	1,286	1,246	1,326	1,343	1,499	1,478	1,592	981	1,086

# Processor Frozen Catfish Total Ending Inventory



**Frozen Whole Catfish, Ending Inventory, 1,000 pounds**

Month	1987	1988	1989	1990	1991	1992	1993	1994	1995	1996	1997
Jan	1,397	1,472	1,785	2,579	2,050	2,314	1,589	1,359	1,626	1191	1,470
Feb	1,358	1,643	1,879	2,466	1,855	2,235	1,805	1,101	1,891	1,110	1,444
Mar	1,260	1,437	1,774	2,751	2,018	2,665	2,004	1,116	2,307	1,101	1,550
Apr	1,511	1,086	1,759	3,046	2,022	3,067	1,644	928	2,061	925	1,537
May	1,411	782	1,787	3,165	1,932	2,641	1,203	714	1,954	702	1,452
Jun	1,073	761	1,580	3,116	1,784	2,378	1,050	658	1,641	737	1,442
Jul	849	652	1,425	2,697	1,885	1,833	925	678	1,563	717	1,430
Aug	676	647	1,335	2,322	1,686	1,711	955	827	1,357	652	1,240
Sep	835	562	1,479	2,016	1,750	1,496	865	959	1,159	689	984
Oct	1,008	739	1,742	1,908	1,862	1,385	966	963	1,166	804	937
Nov	1,082	1,222	2,149	1,783	2,215	1,456	1,082	1,118	1,187	923	1,061
Dec	1,330	1,666	2,378	1,863	2,328	1,691	1,208	1,416	1,868	1,217	1,142
Monthly Avg lbs	1,149	1,056	1,756	2,476	1,949	2,073	1,275	986	1,648	897	1,307
Annual Pounds	13,790	12,669	21,072	29,712	23,387	24,872	15,296	11,837	19,780	10,768	15,689
Month	1998	1999	2000	2001	2002	2003	2004	2005	2006	2007	2008
Jan	1,057	921	1,403	727	814	1,265	1,401	724	976	1,145	1,043
Feb	953	895	1,639	842	779	1,596	1,438	800	1,058	1,207	1,155
Mar	1,088	969	1,552	867	997	1,794	1,415	1,213	1,047	1,280	1,268
Apr	1,006	960	1,419	888	999	1,749	1,363	1,110	946	1,077	1,368
May	1,501	844	1,291	819	878	1,617	1,327	725	809	1,001	1,332
Jun	898	861	1,620	633	819	1,454	1,133	736	770	918	1,380
Jul	724	737	943	439	807	1,290	1,060	739	716	914	1,281
Aug	522	611	714	495	767	1,066	806	682	626	853	862
Sep	456	644	527	549	766	1,007	704	567	571	769	719
Oct	436	719	484	539	769	936	577	538	692	776	743
Nov	520	729	521	588	902	862	553	637	765	794	706
Dec	650	1,078	661	730	1015	1,178	685	831	877	888	668
Monthly Avg lbs	818	831	1,065	676	859	1,318	1,039	775	821	969	1,044
Annual Pounds	9,811	9,968	12,774	8,116	10,312	15,814	12,462	9,302	9,853	11,622	12,525

**Frozen Catfish Fillet, Ending Inventory, 1,000 pounds**

<b>Month</b>	<b>1987</b>	<b>1988</b>	<b>1989</b>	<b>1990</b>	<b>1991</b>	<b>1992</b>	<b>1993</b>	<b>1994</b>	<b>1995</b>	<b>1996</b>	<b>1997</b>
<b>Jan</b>	2,015	2,155	4,598	3,243	3,880	4,060	5,270	4,189	5,863	5,649	7,659
<b>Feb</b>	1,641	1,895	4,526	3,285	3,747	3,775	4,567	2,924	5,235	4,561	7,155
<b>Mar</b>	1,515	1,901	3,935	3,205	4,079	3,244	4,936	2,874	5,242	5,457	6,346
<b>Apr</b>	1,840	1,532	3,386	3,181	3,906	3,544	5,611	3,019	5,051	5,362	6,837
<b>May</b>	2,059	844	3,314	3,159	3,422	4,033	4,842	2,332	4,656	5,052	6,115
<b>Jun</b>	1,666	885	3,524	3,011	3,367	4,099	3,752	2,274	4,271	5,068	5,657
<b>Jul</b>	1,375	1,323	2,928	2,868	3,394	3,470	3,695	2,231	4,368	5,458	5,370
<b>Aug</b>	1,299	1,730	3,013	3,089	3,842	3,304	3,476	2,771	4,535	6,016	5,442
<b>Sep</b>	1,359	2,400	2,732	3,186	3,788	3,838	3,365	3,357	4,904	6,281	5,834
<b>Oct</b>	1,539	3,044	2,891	3,138	3,717	3,679	3,935	3,690	5,879	6,649	6,091
<b>Nov</b>	1,434	3,934	3,319	3,558	4,284	4,783	5,058	4,964	6,458	7,355	6,695
<b>Dec</b>	2,112	4,706	2,968	3,960	4,166	5,434	5,089	5,975	6,242	7,686	7,536
<b>Monthly Avg lbs</b>	1,655	2,196	3,428	3,240	3,799	3,939	4,466	3,383	5,225	5,883	6,395
<b>Annual Pounds</b>	19,854	26,349	41,134	38,883	45,592	47,263	53,596	40,600	62,704	70,594	76,737
<b>Month</b>	<b>1998</b>	<b>1999</b>	<b>2000</b>	<b>2001</b>	<b>2002</b>	<b>2003</b>	<b>2004</b>	<b>2005</b>	<b>2006</b>	<b>2007</b>	<b>2008</b>
<b>Jan</b>	6,893	7,024	7,640	7,787	9,750	6,545	7,438	10,368	8,512	12,839	8,889
<b>Feb</b>	5,074	6,059	7,498	6,672	7,462	5,530	5,674	8,911	6,838	12,172	7,421
<b>Mar</b>	5,134	4,940	6,886	7,197	7,317	5,194	5,539	8,654	5,881	13,143	6,187
<b>Apr</b>	5,307	3,964	6,163	7,248	6,735	5,382	6,032	8,139	4,330	12,719	7,013
<b>May</b>	4,714	3,435	5,596	7,999	6,174	5,927	6,120	7,867	3,239	10,821	7,315
<b>Jun</b>	4,767	3,253	5,084	8,349	5,864	6,148	6,232	7,784	3,070	10,506	7,822
<b>Jul</b>	5,042	3,486	5,598	8,374	5,661	6,477	6,610	8,019	3,849	8,504	8,491
<b>Aug</b>	5,105	4,000	6,200	8,254	5,873	6,665	7,319	8,323	5,923	8,618	7,934
<b>Sep</b>	5,325	4,599	7,605	9,130	6,528	6,130	8,496	8,070	7,795	8,746	8,951
<b>Oct</b>	6,323	5,667	8,340	10,068	6,659	6,706	9,239	7,674	9,338	8,839	10,481
<b>Nov</b>	6,456	6,515	9,624	10,773	7,228	8,365	10,533	8,597	12,352	9,696	10,977
<b>Dec</b>	6,781	7,448	9,617	11,231	7,348	8,470	11,243	9,342	12,381	11,142	11,329
<b>Monthly Avg lbs</b>	5,577	5,033	7,154	8,590	6,883	6,462	7,540	8,479	6,959	10,645	8,568
<b>Annual Pounds</b>	66,921	60,390	85,851	103,082	82,599	77,539	90,475	101,748	83,508	127,745	102,810

**Frozen Other Catfish, Total Ending Inventory, 1,000 pounds**

<b>Month</b>	<b>1987</b>	<b>1988</b>	<b>1989</b>	<b>1990</b>	<b>1991</b>	<b>1992</b>	<b>1993</b>	<b>1994</b>	<b>1995</b>	<b>1996</b>	<b>1997</b>
<b>Jan</b>	640	1,785	1,397	2,681	2,716	2,300	3,903	2,749	2,738	2499	2,498
<b>Feb</b>	655	1,755	853	2,495	2,175	1,717	3,557	1,978	2,604	1,724	2,121
<b>Mar</b>	742	1,927	1,468	2,638	2,359	1,700	3,369	2,142	2,175	1,570	1,708
<b>Apr</b>	913	1,631	1,482	2,506	2,353	2,365	3,433	2,298	2,191	1,637	1,869
<b>May</b>	1,039	1,498	1,588	2,591	2,398	2,632	3,725	2,004	2,190	1,960	1,816
<b>Jun</b>	963	1,601	1,156	2,360	2,327	2,606	3,605	2,153	2,286	1,994	1,861
<b>Jul</b>	984	1,791	1,368	2,636	2,309	2,456	2,978	2,240	2,360	2,292	2,036
<b>Aug</b>	1,082	2,471	1,703	2,466	2,135	2,380	2,471	2,497	1,980	2,241	2,247
<b>Sep</b>	738	2,470	1,651	1,913	2,452	2,736	2,642	2,716	1,519	2,456	2,227
<b>Oct</b>	1,295	1,979	1,936	2,171	2,408	3,068	2,851	2,673	2,198	2,572	1,886
<b>Nov</b>	1,389	2,103	1,830	2,607	2,514	3,500	3,014	2,949	2,619	2,353	2,005
<b>Dec</b>	1,526	2,065	2,264	2,951	2,443	3,879	2,477	3,221	2,828	2,415	2,677
<b>Monthly Avg lbs</b>	997	1,923	1,558	2,501	2,382	2,612	3,169	2,468	2,307	2,143	2,079
<b>Annual Pounds</b>	11,966	23,076	18,696	30,015	28,589	31,339	38,025	29,620	27,688	25,713	24,951
<b>Month</b>	<b>1998</b>	<b>1999</b>	<b>2000</b>	<b>2001</b>	<b>2002</b>	<b>2003</b>	<b>2004</b>	<b>2005</b>	<b>2006</b>	<b>2007</b>	<b>2008</b>
<b>Jan</b>	2,355	3,026	3,020	2,425	2,187	2,800	3,030	2,692	2,957	4,390	2,021
<b>Feb</b>	1,903	2,441	2,537	2,384	1,740	2,114	2,810	2,742	2,376	3,361	1,877
<b>Mar</b>	2,168	2,449	2,695	2,465	2,138	2,245	2,977	3,213	2,760	3,513	1,996
<b>Apr</b>	2,982	2,578	2,942	2,739	1,943	2,770	3,867	3,162	2,617	3,680	2,196
<b>May</b>	3,330	2,602	3,341	2,598	2,277	3,628	3,720	3,532	2,463	2,927	2,358
<b>Jun</b>	3,034	2,983	2,850	2,537	2,396	3,173	3,076	3,304	2,695	2,919	2,616
<b>Jul</b>	3,351	2,712	2,429	2,208	2,275	3,157	3,377	3,364	3,073	2,878	2,611
<b>Aug</b>	2,935	2,164	2,458	2,098	2,146	3,180	2,734	3,140	3,512	2,464	2,746
<b>Sep</b>	2,906	2,465	2,699	2,216	2,077	2,415	2,520	2,824	3,506	2,270	2,448
<b>Oct</b>	2,755	2,578	2,694	2,225	2,759	2,524	2,203	2,348	4,016	2,428	2,597
<b>Nov</b>	2,837	2,990	3,057	2,329	2,848	2,955	2,433	2,748	4,393	2,666	2,587
<b>Dec</b>	2,863	3,365	2,782	2,325	3,269	3,401	2,669	2,983	4,472	2,650	2,997
<b>Monthly Avg lbs</b>	2,785	2,696	2,792	2,379	2,338	2,864	2,951	3,004	3,237	3,012	2,421
<b>Annual Pounds</b>	33,419	32,353	33,504	28,549	28,055	34,362	35,416	36,052	38,840	36,146	29,050

**Total Fresh and Frozen Catfish, Ending Inventory, 1,000 pounds**

Month	1987	1988	1989	1990	1991	1992	1993	1994	1995	1996	1997
Jan	4,366	5,948	8,413	9,224	9,279	9,582	11,647	9,094	10,965	10,170	12,314
Feb	4,198	5,860	8,216	8,968	8,632	8,695	11,174	6,904	10,424	8,422	11,539
Mar	4,203	5,744	7,823	9,113	9,259	9,022	11,251	6,896	10,536	8,986	10,315
Apr	4,747	4,673	7,236	9,455	8,922	10,105	11,444	6,911	9,940	8,652	10,939
May	4,951	3,528	7,389	9,459	8,544	10,238	10,550	5,886	9,529	8,353	10,006
Jun	4,192	3,786	6,970	9,128	8,243	10,067	9,213	5,946	9,041	8,490	9,629
Jul	3,732	4,243	6,451	8,708	8,362	8,718	8,197	6,135	9,272	9,319	9,515
Aug	3,507	5,442	6,843	8,558	8,424	8,519	7,684	7,096	8,756	9,674	9,569
Sep	3,535	5,863	6,679	7,765	8,835	8,921	7,710	8,076	8,454	10,102	9,764
Oct	4,403	6,355	7,451	7,961	8,871	9,071	8,657	8,310	10,101	10,752	9,662
Nov	4,367	7,816	7,996	8,685	9,782	10,579	9,902	9,837	10,996	11,259	10,319
Dec	5,288	8,848	8,147	9,384	9,635	11,629	9,502	11,623	11,591	11,894	11,911
Monthly Avg lbs	4,291	5,676	7,468	8,867	8,899	9,596	9,744	7,726	9,967	9,673	10,457
Annual Pounds	51,489	68,106	89,614	106,408	106,788	115,146	116,931	92,714	119,605	116,073	125,482
Month	1998	1999	2000	2001	2002	2003	2004	2005	2006	2007	2008
Jan	11,040	11,716	12,862	11,855	13,644	11,604	12,705	14,645	13,467	19,319	12,855
Feb	8,680	10,103	12,568	10,754	10,830	10,016	10,788	13,273	11,108	17,487	10,994
Mar	9,156	9,015	11,921	11,229	11,234	10,059	10,958	14,052	10,263	18,516	10,209
Apr	10,007	8,079	11,138	11,730	10,324	10,825	12,061	12,987	8,496	17,915	11,403
May	10,014	7,515	10,996	12,126	9,964	11,833	11,992	12,948	7,232	15,443	11,570
Jun	9,263	7,764	10,313	12,261	9,793	11,500	11,391	12,608	7,333	14,848	12,378
Jul	9,796	7,586	9,749	11,794	9,601	11,684	11,879	12,867	8,569	12,902	13,157
Aug	9,369	7,515	10,264	11,581	9,588	11,617	11,657	12,881	11,097	12,441	12,037
Sep	9,406	8,504	11,588	12,774	10,056	10,422	12,661	12,168	12,631	12,357	12,995
Oct	10,236	9,713	12,450	13,761	10,986	10,961	12,769	11,457	15,058	12,706	14,563
Nov	10,370	10,894	13,920	14,315	11,673	12,977	14,221	12,855	18,684	13,676	15,191
Dec	10,807	12,551	13,598	14,997	12,283	13,592	15,172	13,707	18,174	15,064	15,520
Monthly Avg lbs	9,845	9,246	11,781	12,431	10,831	11,424	12,355	13,037	11,843	15,223	12,739
Annual Pounds	118,144	110,955	141,367	149,177	129,976	137,090	148,254	156,448	142,112	182,674	152,872