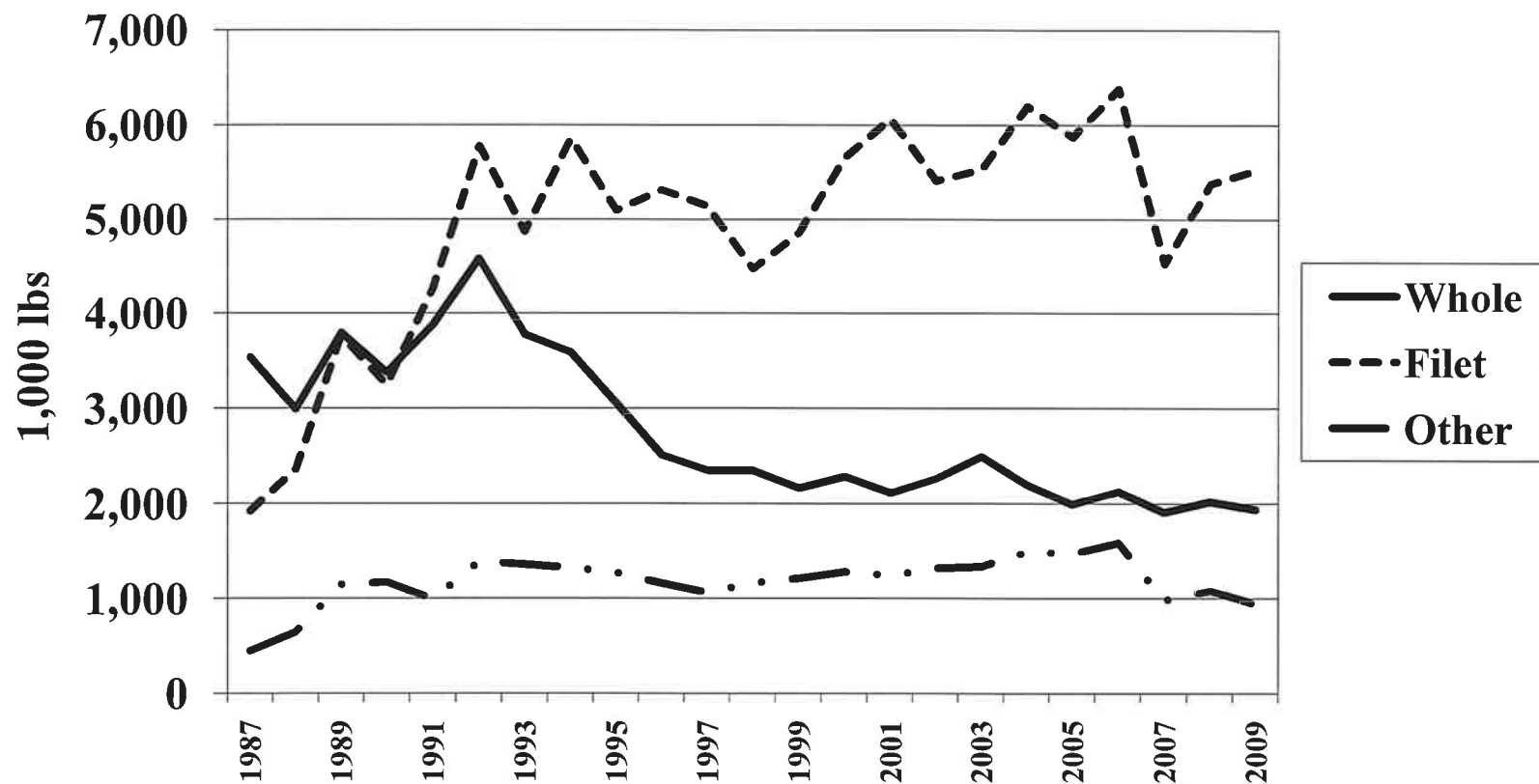


Processor Total  
Ending Inventory

# Processor Fresh Catfish Total Inventory



**Fresh Whole Catfish, Total Ending Inventory, 1,000 pounds**

<b>Month</b>	<b>1989</b>	<b>1990</b>	<b>1991</b>	<b>1992</b>	<b>1993</b>	<b>1994</b>	<b>1995</b>	<b>1996</b>	<b>1997</b>	<b>1998</b>	<b>1999</b>
<b>Jan</b>	295	303	253	353	381	270	262	262	232	218	208
<b>Feb</b>	318	382	380	335	307	345	239	294	242	235	184
<b>Mar</b>	257	232	308	627	454	342	286	221	220	230	180
<b>Apr</b>	319	405	309	479	314	251	215	218	216	195	136
<b>May</b>	321	245	317	382	296	287	219	200	201	130	196
<b>Jun</b>	300	190	268	417	313	306	282	219	195	167	194
<b>Jul</b>	315	195	330	310	247	306	375	216	186	196	163
<b>Aug</b>	381	258	328	274	340	358	304	185	190	232	210
<b>Sep</b>	336	268	444	347	375	376	254	166	184	229	177
<b>Oct</b>	406	314	396	371	240	317	264	202	168	215	192
<b>Nov</b>	302	324	285	352	225	243	190	151	138	163	159
<b>Dec</b>	245	258	322	296	287	184	166	184	151	143	169
<b>Monthly Avg lbs</b>	316	281	328	379	315	299	255	210	194	196	181
<b>Annual Pounds</b>	3,795	3,374	3,940	4,543	3,779	3,585	3,056	2,518	2,323	2,353	2,168
<b>Month</b>	<b>2000</b>	<b>2001</b>	<b>2002</b>	<b>2003</b>	<b>2004</b>	<b>2005</b>	<b>2006</b>	<b>2007</b>	<b>2008</b>	<b>2009</b>	
<b>Jan</b>	234	222	210	274	191	211	226	222	268	191	
<b>Feb</b>	233	215	199	234	188	170	209	209	170	127	
<b>Mar</b>	203	146	225	211	316	187	212	166	191	167	
<b>Apr</b>	145	229	131	362	184	113	152	142	211	181	
<b>May</b>	232	170	167	185	211	190	126	168	136	154	
<b>Jun</b>	212	154	195	205	237	175	127	119	122	171	
<b>Jul</b>	203	169	236	181	162	146	173	154	168	134	
<b>Aug</b>	187	169	191	212	146	169	246	120	87	156	
<b>Sep</b>	151	164	185	172	168	139	111	170	257	198	
<b>Oct</b>	188	197	196	183	151	192	204	214	131	165	
<b>Nov</b>	188	143	183	169	127	211	245	122	131	181	
<b>Dec</b>	116	139	152	111	120	90	97	106	149	114	
<b>Monthly Avg lbs</b>	191	176	189	208	183	166	177	159	168	162	
<b>Annual Pounds</b>	2,292	2,117	2,270	2,499	2,201	1,993	2,128	1,912	2,021	1,939	

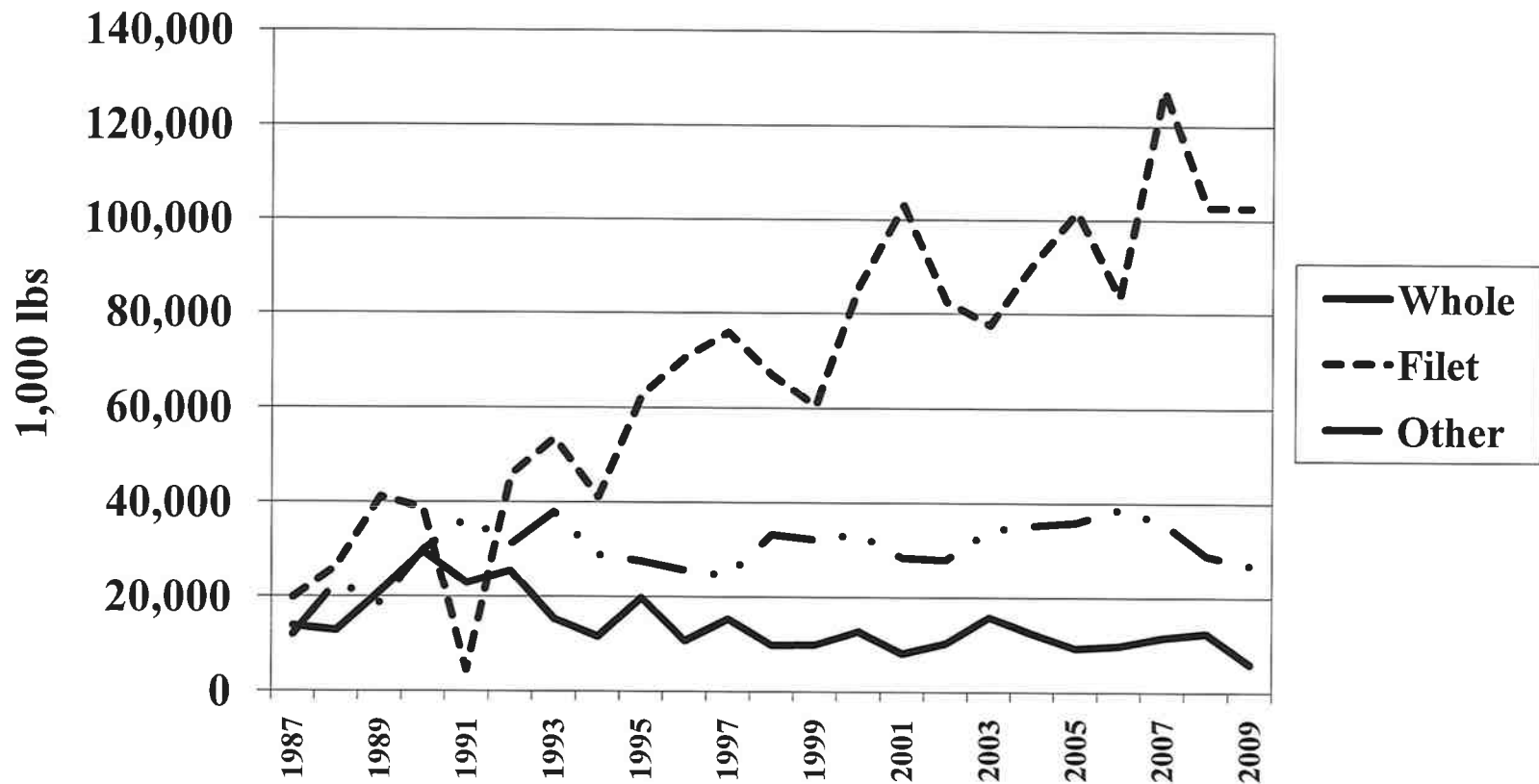
**Fresh Catfish Fillet, Ending Inventory, 1,000 pounds**

<b>Month</b>	<b>1989</b>	<b>1990</b>	<b>1991</b>	<b>1992</b>	<b>1993</b>	<b>1994</b>	<b>1995</b>	<b>1996</b>	<b>1997</b>	<b>1998</b>	<b>1999</b>
<b>Jan</b>	260	321	292	464	411	379	393	461	385	418	451
<b>Feb</b>	464	253	365	510	711	468	369	617	477	410	420
<b>Mar</b>	314	217	393	631	381	343	424	527	369	391	393
<b>Apr</b>	222	228	275	543	368	328	315	425	407	340	348
<b>May</b>	301	211	378	462	376	411	399	360	344	270	336
<b>Jun</b>	338	268	390	434	383	425	425	383	373	330	385
<b>Jul</b>	336	218	340	515	279	545	488	526	394	393	391
<b>Aug</b>	324	306	395	677	336	539	466	490	353	484	413
<b>Sep</b>	369	286	336	398	357	551	499	422	424	395	494
<b>Oct</b>	346	326	407	451	510	555	470	415	462	380	437
<b>Nov</b>	279	329	406	398	416	457	457	340	353	348	392
<b>Dec</b>	210	283	299	252	342	722	394	349	329	313	397
<b>Monthly Avg lbs</b>	314	271	356	478	406	477	425	443	389	373	405
<b>Annual Pounds</b>	3,763	3,246	4,276	5,735	4,870	5,723	5,099	5,315	4,670	4,472	4,857
<b>Month</b>	<b>2000</b>	<b>2001</b>	<b>2002</b>	<b>2003</b>	<b>2004</b>	<b>2005</b>	<b>2006</b>	<b>2007</b>	<b>2008</b>	<b>2009</b>	
<b>Jan</b>	460	586	551	561	507	513	622	602	519	545	
<b>Feb</b>	520	536	530	420	550	520	501	442	320	414	
<b>Mar</b>	494	470	474	495	552	632	363	343	474	610	
<b>Apr</b>	399	520	411	445	487	368	352	240	524	477	
<b>May</b>	428	453	355	408	512	510	481	427	340	435	
<b>Jun</b>	448	493	407	440	579	495	472	316	334	493	
<b>Jul</b>	462	516	488	442	540	482	581	364	499	461	
<b>Aug</b>	578	458	477	398	530	423	652	348	344	427	
<b>Sep</b>	495	559	405	581	624	463	556	318	538	436	
<b>Oct</b>	591	617	498	495	490	566	687	449	468	445	
<b>Nov</b>	449	404	407	505	473	531	770	398	709	428	
<b>Dec</b>	336	455	411	343	357	372	347	278	311	356	
<b>Monthly Avg lbs</b>	472	506	451	461	517	490	532	377	448	461	
<b>Annual Pounds</b>	5,660	6,067	5,414	5,533	6,201	5,875	6,384	4,525	5,380	5,527	

**Fresh Other Catfish, Total Ending Inventory, 1,000 pounds**

Month	1989	1990	1991	1992	1993	1994	1995	1996	1997	1998	1999
Jan	78	97	88	91	93	148	83	108	70	99	86
Feb	176	87	110	123	227	88	86	116	100	105	104
Mar	75	70	102	155	107	79	102	110	122	145	84
Apr	68	89	57	107	74	87	107	85	73	177	93
May	78	88	97	88	108	138	111	79	78	69	102
Jun	72	183	107	133	110	130	136	89	101	67	88
Jul	79	94	104	134	73	135	118	110	99	90	97
Aug	87	117	38	173	106	104	114	90	97	91	117
Sep	112	96	65	106	106	117	119	88	111	95	125
Oct	130	104	81	117	155	112	124	110	118	127	120
Nov	117	84	78	90	107	106	85	137	67	46	109
Dec	82	69	77	77	99	105	93	43	76	57	94
Monthly Avg lbs	96	98	84	116	114	112	107	97	93	97	102
Annual Pounds	1,154	1,178	1,004	1,394	1,365	1,349	1,278	1,165	1,112	1,168	1,219
Month	2000	2001	2002	2003	2004	2005	2006	2007	2008	2009	
Jan	105	108	132	159	138	137	174	121	115	103	
Feb	141	105	120	122	128	130	126	96	51	81	
Mar	91	84	83	120	159	153	121	71	93	60	
Apr	70	106	105	117	128	95	99	57	91	104	
May	108	87	113	68	102	124	114	99	89	77	
Jun	99	95	112	80	134	114	199	72	104	100	
Jul	114	88	134	137	130	117	177	88	107	111	
Aug	127	107	134	96	122	144	138	38	64	80	
Sep	111	156	95	117	149	105	92	84	82	72	
Oct	153	115	105	117	109	139	121	98	143	62	
Nov	81	78	105	121	102	131	159	98	81	55	
Dec	86	117	88	89	98	89	72	59	66	44	
Monthly Avg lbs	107	104	111	112	125	123	133	82	91	79	
Annual Pounds	1,286	1,246	1,326	1,343	1,499	1,478	1,592	981	1,086	949	

# Processor Frozen Catfish Total Ending Inventory



**Frozen Whole Catfish, Ending Inventory, 1,000 pounds**

Month	1989	1990	1991	1992	1993	1994	1995	1996	1997	1998	1999
Jan	1,785	2,579	2,050	2,314	1,589	1,359	1,626	1191	1,470	1,057	921
Feb	1,879	2,466	1,855	2,235	1,805	1,101	1,891	1,110	1,444	953	895
Mar	1,774	2,751	2,018	2,665	2,004	1,116	2,307	1,101	1,550	1,088	969
Apr	1,759	3,046	2,022	3,067	1,644	928	2,061	925	1,537	1,006	960
May	1,787	3,165	1,932	2,641	1,203	714	1,954	702	1,452	1,501	844
Jun	1,580	3,116	1,784	2,378	1,050	658	1,641	737	1,442	898	861
Jul	1,425	2,697	1,885	1,833	925	678	1,563	717	1,430	724	737
Aug	1,335	2,322	1,686	1,711	955	827	1,357	652	1,240	522	611
Sep	1,479	2,016	1,750	1,496	865	959	1,159	689	984	456	644
Oct	1,742	1,908	1,862	1,385	966	963	1,166	804	937	436	719
Nov	2,149	1,783	2,215	1,456	1,082	1,118	1,187	923	1,061	520	729
Dec	2,378	1,863	2,328	1,691	1,208	1,416	1,868	1,217	1,142	650	1,078
Monthly Avg lbs	1,756	2,476	1,949	2,073	1,275	986	1,648	897	1,307	818	831
Annual Pounds	21,072	29,712	23,387	24,872	15,296	11,837	19,780	10,768	15,689	9,811	9,968
Month	2000	2001	2002	2003	2004	2005	2006	2007	2008	2009	
Jan	1,403	727	814	1,265	1,401	724	976	1,145	1,043	724	
Feb	1,639	842	779	1,596	1,438	800	1,058	1,207	1,155	499	
Mar	1,552	867	997	1,794	1,415	1,213	1,047	1,280	1,268	393	
Apr	1,419	888	999	1,749	1,363	1,110	946	1,077	1,368	405	
May	1,291	819	878	1,617	1,327	725	809	1,001	1,332	340	
Jun	1,620	633	819	1,454	1,133	736	770	918	1,380	436	
Jul	943	439	807	1,290	1,060	739	716	914	1,281	464	
Aug	714	495	767	1,066	806	682	626	853	862	507	
Sep	527	549	766	1,007	704	567	571	769	719	480	
Oct	484	539	769	936	577	538	692	776	743	483	
Nov	521	588	902	862	553	637	765	794	706	568	
Dec	661	730	1015	1,178	685	831	877	888	668	713	
Monthly Avg lbs	1,065	676	859	1,318	1,039	775	821	969	1,044	501	
Annual Pounds	12,774	8,116	10,312	15,814	12,462	9,302	9,853	11,622	12,525	6,012	

**Frozen Catfish Fillet, Ending Inventory, 1,000 pounds**

<b>Month</b>	<b>1989</b>	<b>1990</b>	<b>1991</b>	<b>1992</b>	<b>1993</b>	<b>1994</b>	<b>1995</b>	<b>1996</b>	<b>1997</b>	<b>1998</b>	<b>1999</b>
<b>Jan</b>	4,598	3,243	3,880	4,060	5,270	4,189	5,863	5,649	7,659	6,893	7,024
<b>Feb</b>	4,526	3,285	3,747	3,775	4,567	2,924	5,235	4,561	7,155	5,074	6,059
<b>Mar</b>	3,935	3,205	4,079	3,244	4,936	2,874	5,242	5,457	6,346	5,134	4,940
<b>Apr</b>	3,386	3,181	3,906	3,544	5,611	3,019	5,051	5,362	6,837	5,307	3,964
<b>May</b>	3,314	3,159	3,422	4,033	4,842	2,332	4,656	5,052	6,115	4,714	3,435
<b>Jun</b>	3,524	3,011	3,367	4,099	3,752	2,274	4,271	5,068	5,657	4,767	3,253
<b>Jul</b>	2,928	2,868	3,394	3,470	3,695	2,231	4,368	5,458	5,370	5,042	3,486
<b>Aug</b>	3,013	3,089	3,842	3,304	3,476	2,771	4,535	6,016	5,442	5,105	4,000
<b>Sep</b>	2,732	3,186	3,788	3,838	3,365	3,357	4,904	6,281	5,834	5,325	4,599
<b>Oct</b>	2,891	3,138	3,717	3,679	3,935	3,690	5,879	6,649	6,091	6,323	5,667
<b>Nov</b>	3,319	3,558	4,284	4,783	5,058	4,964	6,458	7,355	6,695	6,456	6,515
<b>Dec</b>	2,968	3,960	4,166	5,434	5,089	5,975	6,242	7,686	7,536	6,781	7,448
<b>Monthly Avg lbs</b>	3,428	3,240	3,799	3,939	4,466	3,383	5,225	5,883	6,395	5,577	5,033
<b>Annual Pounds</b>	41,134	38,883	45,592	47,263	53,596	40,600	62,704	70,594	76,737	66,921	60,390
<b>Month</b>	<b>2000</b>	<b>2001</b>	<b>2002</b>	<b>2003</b>	<b>2004</b>	<b>2005</b>	<b>2006</b>	<b>2007</b>	<b>2008</b>	<b>2009</b>	
<b>Jan</b>	7,640	7,787	9,750	6,545	7,438	10,368	8,512	12,839	8,889	10,084	
<b>Feb</b>	7,498	6,672	7,462	5,530	5,674	8,911	6,838	12,172	7,421	8,838	
<b>Mar</b>	6,886	7,197	7,317	5,194	5,539	8,654	5,881	13,143	6,187	7,933	
<b>Apr</b>	6,163	7,248	6,735	5,382	6,032	8,139	4,330	12,719	7,013	7,478	
<b>May</b>	5,596	7,999	6,174	5,927	6,120	7,867	3,239	10,821	7,315	7,381	
<b>Jun</b>	5,084	8,349	5,864	6,148	6,232	7,784	3,070	10,506	7,822	7,349	
<b>Jul</b>	5,598	8,374	5,661	6,477	6,610	8,019	3,849	8,504	8,491	7,915	
<b>Aug</b>	6,200	8,254	5,873	6,665	7,319	8,323	5,923	8,618	7,934	8,690	
<b>Sep</b>	7,605	9,130	6,528	6,130	8,496	8,070	7,795	8,746	8,951	8,058	
<b>Oct</b>	8,340	10,068	6,659	6,706	9,239	7,674	9,338	8,839	10,481	8,820	
<b>Nov</b>	9,624	10,773	7,228	8,365	10,533	8,597	12,352	9,696	10,977	9,964	
<b>Dec</b>	9,617	11,231	7,348	8,470	11,243	9,342	12,381	11,142	11,329	10,169	
<b>Monthly Avg lbs</b>	7,154	8,590	6,883	6,462	7,540	8,479	6,959	10,645	8,568	8,557	
<b>Annual Pounds</b>	85,851	103,082	82,599	77,539	90,475	101,748	83,508	127,745	102,810	102,679	

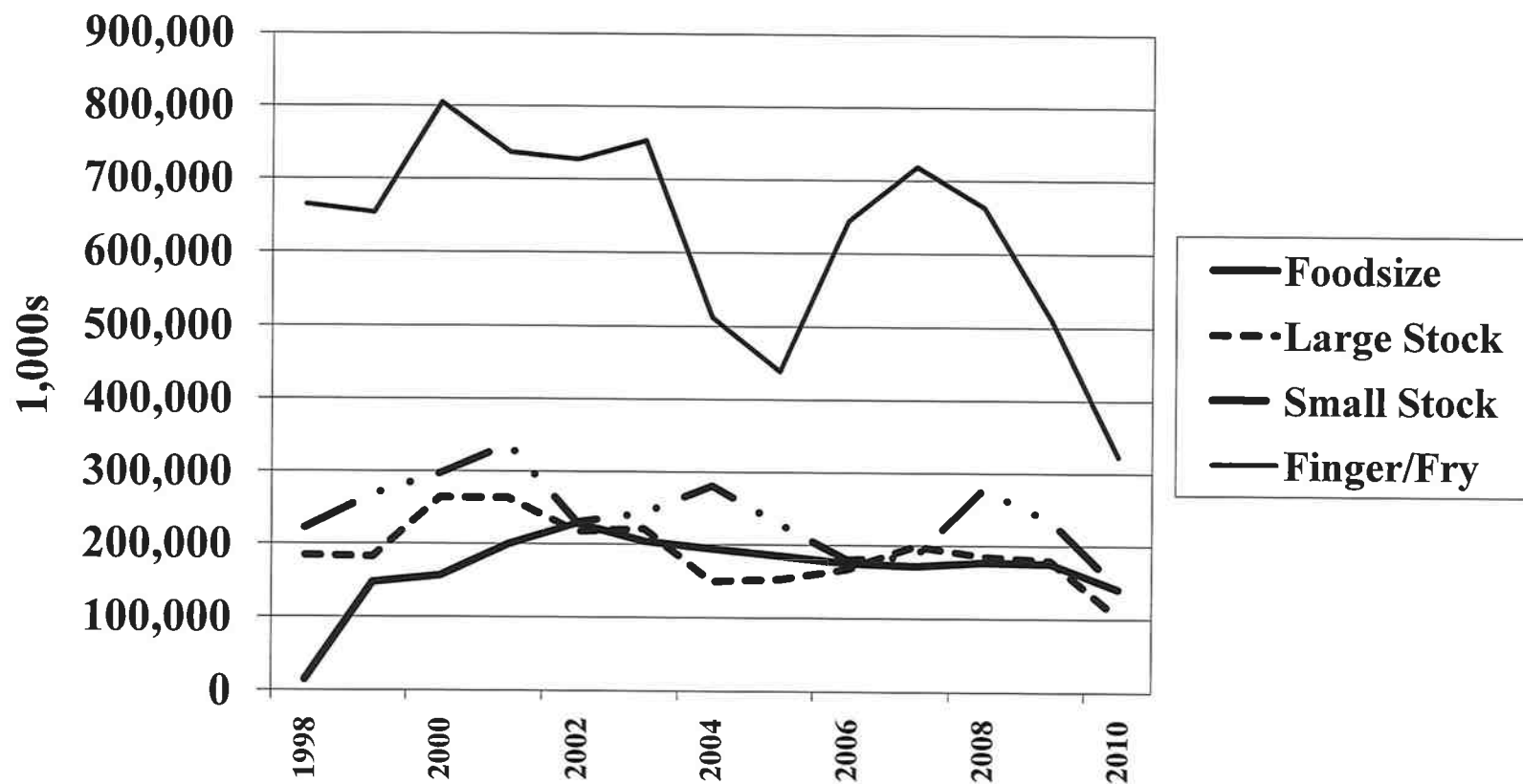
**Frozen Other Catfish, Total Ending Inventory, 1,000 pounds**

<b>Month</b>	<b>1989</b>	<b>1990</b>	<b>1991</b>	<b>1992</b>	<b>1993</b>	<b>1994</b>	<b>1995</b>	<b>1996</b>	<b>1997</b>	<b>1998</b>	<b>1999</b>
<b>Jan</b>	1,397	2,681	2,716	2,300	3,903	2,749	2,738	2,499	2,498	2,355	3,026
<b>Feb</b>	853	2,495	2,175	1,717	3,557	1,978	2,604	1,724	2,121	1,903	2,441
<b>Mar</b>	1,468	2,638	2,359	1,700	3,369	2,142	2,175	1,570	1,708	2,168	2,449
<b>Apr</b>	1,482	2,506	2,353	2,365	3,433	2,298	2,191	1,637	1,869	2,982	2,578
<b>May</b>	1,588	2,591	2,398	2,632	3,725	2,004	2,190	1,960	1,816	3,330	2,602
<b>Jun</b>	1,156	2,360	2,327	2,606	3,605	2,153	2,286	1,994	1,861	3,034	2,983
<b>Jul</b>	1,368	2,636	2,309	2,456	2,978	2,240	2,360	2,292	2,036	3,351	2,712
<b>Aug</b>	1,703	2,466	2,135	2,380	2,471	2,497	1,980	2,241	2,247	2,935	2,164
<b>Sep</b>	1,651	1,913	2,452	2,736	2,642	2,716	1,519	2,456	2,227	2,906	2,465
<b>Oct</b>	1,936	2,171	2,408	3,068	2,851	2,673	2,198	2,572	1,886	2,755	2,578
<b>Nov</b>	1,830	2,607	2,514	3,500	3,014	2,949	2,619	2,353	2,005	2,837	2,990
<b>Dec</b>	2,264	2,951	2,443	3,879	2,477	3,221	2,828	2,415	2,677	2,863	3,365
<b>Monthly Avg lbs</b>	1,558	2,501	2,382	2,612	3,169	2,468	2,307	2,143	2,079	2,785	2,696
<b>Annual Pounds</b>	18,696	30,015	28,589	31,339	38,025	29,620	27,688	25,713	24,951	33,419	32,353
<b>Month</b>	<b>2000</b>	<b>2001</b>	<b>2002</b>	<b>2003</b>	<b>2004</b>	<b>2005</b>	<b>2006</b>	<b>2007</b>	<b>2008</b>	<b>2009</b>	
<b>Jan</b>	3,020	2,425	2,187	2,800	3,030	2,692	2,957	4,390	2,021	2,296	
<b>Feb</b>	2,537	2,384	1,740	2,114	2,810	2,742	2,376	3,361	1,877	1,819	
<b>Mar</b>	2,695	2,465	2,138	2,245	2,977	3,213	2,760	3,513	1,996	1,752	
<b>Apr</b>	2,942	2,739	1,943	2,770	3,867	3,162	2,617	3,680	2,196	1,732	
<b>May</b>	3,341	2,598	2,277	3,628	3,720	3,532	2,463	2,927	2,358	1,907	
<b>Jun</b>	2,850	2,537	2,396	3,173	3,076	3,304	2,695	2,919	2,616	1,992	
<b>Jul</b>	2,429	2,208	2,275	3,157	3,377	3,364	3,073	2,878	2,611	2,238	
<b>Aug</b>	2,458	2,098	2,146	3,180	2,734	3,140	3,512	2,464	2,746	2,304	
<b>Sep</b>	2,699	2,216	2,077	2,415	2,520	2,824	3,506	2,270	2,448	2,469	
<b>Oct</b>	2,694	2,225	2,759	2,524	2,203	2,348	4,016	2,428	2,597	2,285	
<b>Nov</b>	3,057	2,329	2,848	2,955	2,433	2,748	4,393	2,666	2,587	3,137	
<b>Dec</b>	2,782	2,325	3,269	3,401	2,669	2,983	4,472	2,650	2,997	3,060	
<b>Monthly Avg lbs</b>	2,792	2,379	2,338	2,864	2,951	3,004	3,237	3,012	2,421	2,249	
<b>Annual Pounds</b>	33,504	28,549	28,055	34,362	35,416	36,052	38,840	36,146	29,050	26,991	

**Total Fresh and Frozen Catfish, Ending Inventory, 1,000 pounds**

<b>Month</b>	<b>1989</b>	<b>1990</b>	<b>1991</b>	<b>1992</b>	<b>1993</b>	<b>1994</b>	<b>1995</b>	<b>1996</b>	<b>1997</b>	<b>1998</b>	<b>1999</b>
<b>Jan</b>	8,413	9,224	9,279	9,582	11,647	9,094	10,965	10,170	12,314	11,040	11,716
<b>Feb</b>	8,216	8,968	8,632	8,695	11,174	6,904	10,424	8,422	11,539	8,680	10,103
<b>Mar</b>	7,823	9,113	9,259	9,022	11,251	6,896	10,536	8,986	10,315	9,156	9,015
<b>Apr</b>	7,236	9,455	8,922	10,105	11,444	6,911	9,940	8,652	10,939	10,007	8,079
<b>May</b>	7,389	9,459	8,544	10,238	10,550	5,886	9,529	8,353	10,006	10,014	7,515
<b>Jun</b>	6,970	9,128	8,243	10,067	9,213	5,946	9,041	8,490	9,629	9,263	7,764
<b>Jul</b>	6,451	8,708	8,362	8,718	8,197	6,135	9,272	9,319	9,515	9,796	7,586
<b>Aug</b>	6,843	8,558	8,424	8,519	7,684	7,096	8,756	9,674	9,569	9,369	7,515
<b>Sep</b>	6,679	7,765	8,835	8,921	7,710	8,076	8,454	10,102	9,764	9,406	8,504
<b>Oct</b>	7,451	7,961	8,871	9,071	8,657	8,310	10,101	10,752	9,662	10,236	9,713
<b>Nov</b>	7,996	8,685	9,782	10,579	9,902	9,837	10,996	11,259	10,319	10,370	10,894
<b>Dec</b>	8,147	9,384	9,635	11,629	9,502	11,623	11,591	11,894	11,911	10,807	12,551
<b>Monthly Avg lbs</b>	7,468	8,867	8,899	9,596	9,744	7,726	9,967	9,673	10,457	9,845	9,246
<b>Annual Pounds</b>	89,614	106,408	106,788	115,146	116,931	92,714	119,605	116,073	125,482	118,144	110,955
<b>Month</b>	<b>2000</b>	<b>2001</b>	<b>2002</b>	<b>2003</b>	<b>2004</b>	<b>2005</b>	<b>2006</b>	<b>2007</b>	<b>2008</b>	<b>2009</b>	
<b>Jan</b>	12,862	11,855	13,644	11,604	12,705	14,645	13,467	19,319	12,855	13,943	
<b>Feb</b>	12,568	10,754	10,830	10,016	10,788	13,273	11,108	17,487	10,994	11,778	
<b>Mar</b>	11,921	11,229	11,234	10,059	10,958	14,052	10,263	18,516	10,209	10,915	
<b>Apr</b>	11,138	11,730	10,324	10,825	12,061	12,987	8,496	17,915	11,403	10,377	
<b>May</b>	10,996	12,126	9,964	11,833	11,992	12,948	7,232	15,443	11,570	10,294	
<b>Jun</b>	10,313	12,261	9,793	11,500	11,391	12,608	7,333	14,848	12,378	10,541	
<b>Jul</b>	9,749	11,794	9,601	11,684	11,879	12,867	8,569	12,902	13,157	11,323	
<b>Aug</b>	10,264	11,581	9,588	11,617	11,657	12,881	11,097	12,441	12,037	12,164	
<b>Sep</b>	11,588	12,774	10,056	10,422	12,661	12,168	12,631	12,357	12,995	11,713	
<b>Oct</b>	12,450	13,761	10,986	10,961	12,769	11,457	15,058	12,706	14,563	12,260	
<b>Nov</b>	13,920	14,315	11,673	12,977	14,221	12,855	18,684	13,676	15,191	14,333	
<b>Dec</b>	13,598	14,997	12,283	13,592	15,172	13,707	18,174	15,064	15,520	14,456	
<b>Monthly Avg lbs</b>	11,781	12,431	10,831	11,424	12,355	13,037	11,843	15,223	12,739	12,008	
<b>Annual Pounds</b>	141,367	149,177	129,976	137,090	148,254	156,448	142,112	182,674	152,872	144,097	

# Mississippi Catfish Inventory Held in Ponds, by Size Category\*



\*January 1 reportings, number of fish