

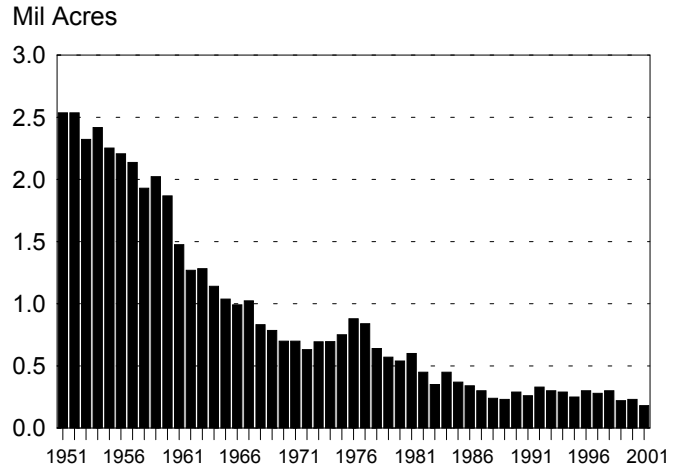
Alabama Agriculture

A Graphic Overview



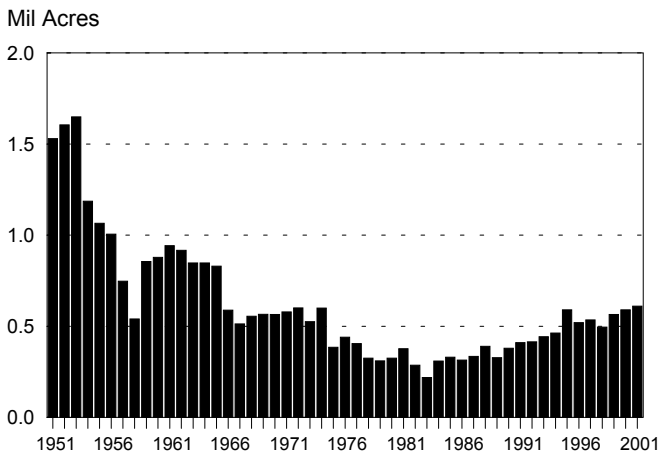
CORN

Acres Planted, 1951-2001



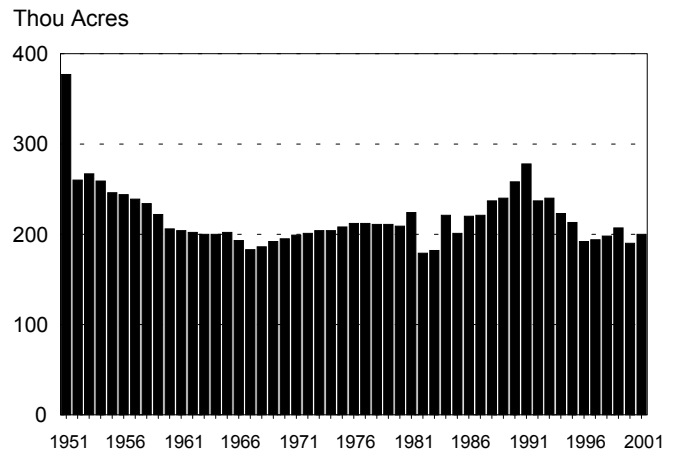
COTTON

Acres Planted, 1951-2001



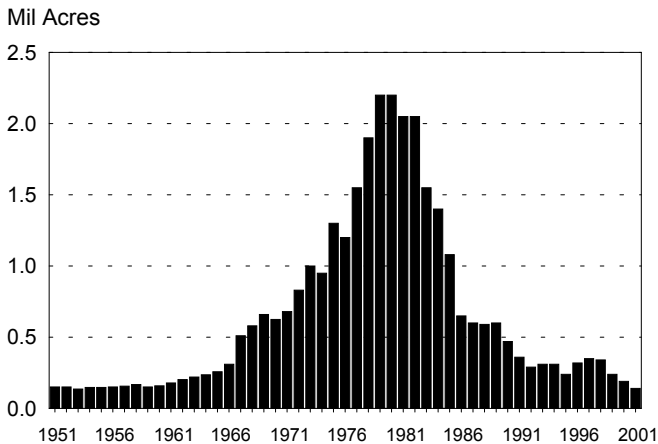
PEANUTS

Acres Planted, 1951-2001



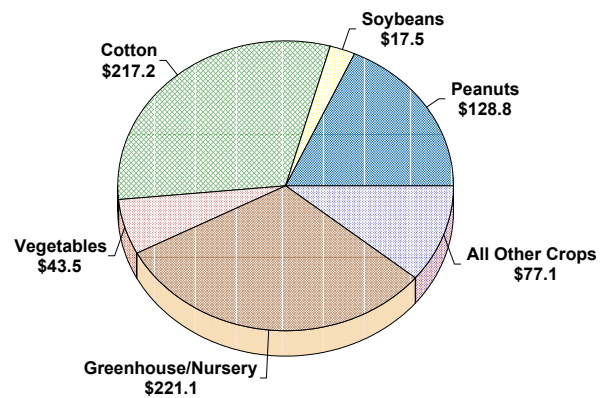
SOYBEANS

Acres Planted, 1951-2001

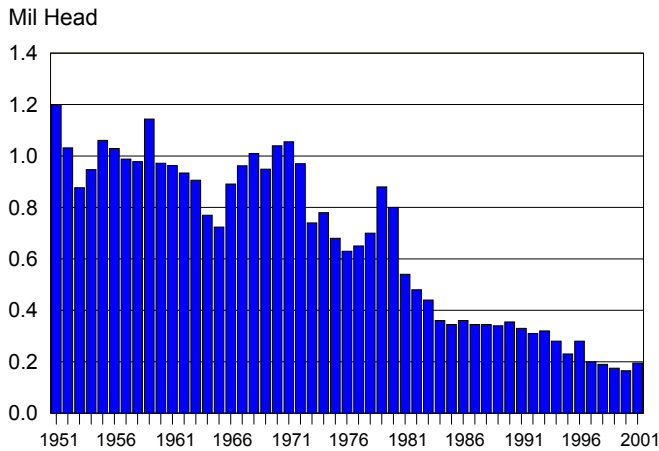


CROP RECEIPTS, 2001

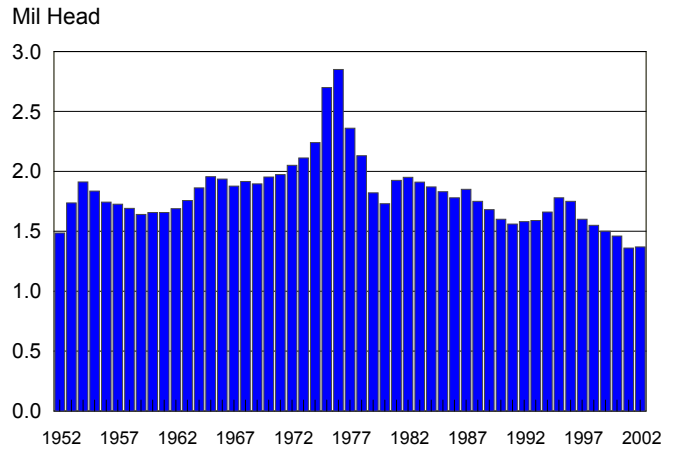
Total: \$705.2 Million



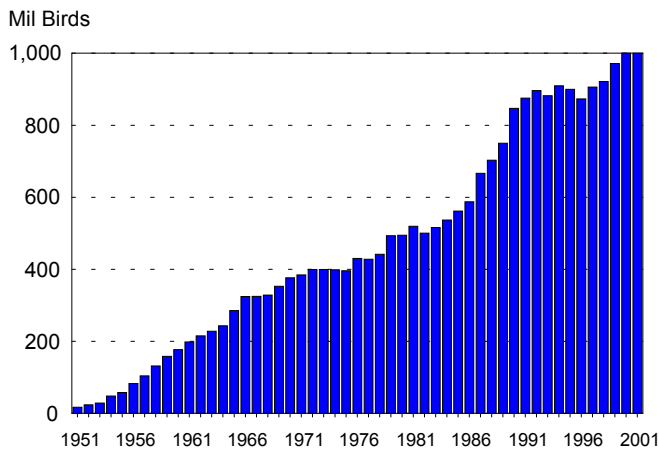
ALABAMA ALL HOGS AND PIGS December 1, 1951 - 2001



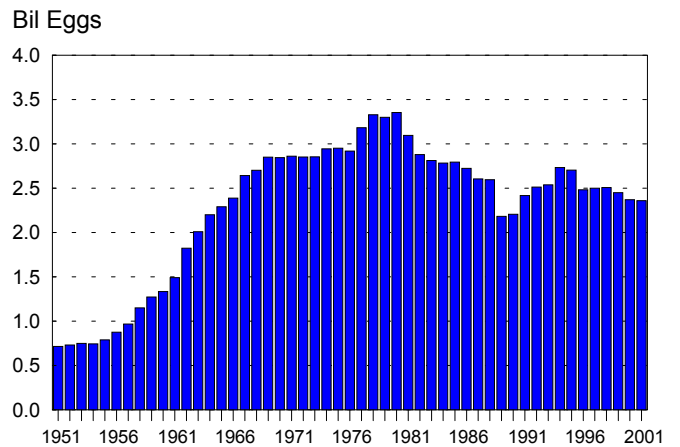
ALL CATTLE January 1, 1952 - 2002



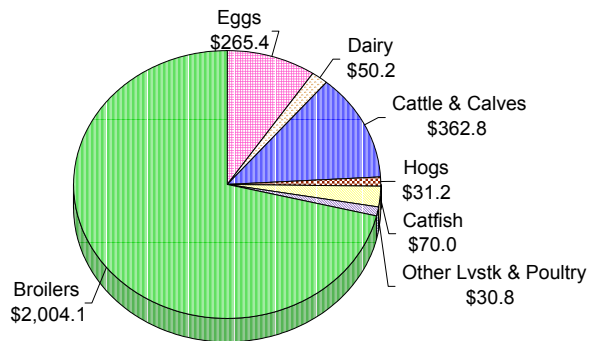
BROILERS PRODUCED 1951-2001



EGG PRODUCTION 1951-2001



Livestock & Poultry Receipts, 2001 Total: \$2,814.5 billion



ALABAMA CATFISH Cash Receipts, 1991 - 2001

