

Prices Review 1998

by
Rick Geesey

Marketing Year Average Prices Received by Farmers, 1989 - 1998 1/

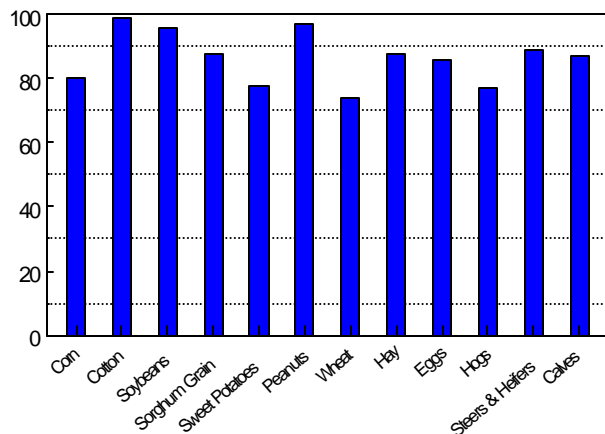
Commodity	Unit	1989	1990	1991	1992	1993	1994	1995	1996	1997	1998
Corn	\$/bu.	2.75	2.69	2.60	2.35	2.64	2.50	3.50	3.45	2.82	2.20
Cotton	ct/lb.	63.7	69.0	56.6	56.2	57.1	69.1	72.9	71.4	67.3	62.9
Cottonseed	\$/ton	96.00	96.50	61.00	82.50	95.50	84.00	90.00	113.00	111.00	111.00
Soybeans	\$/bu.	5.74	5.89	5.60	5.63	6.40	5.65	7.10	6.70	6.65	5.50
Sorghum Grain	\$/cwt.	3.75	4.05	4.15	3.70	4.80	4.45	5.10	5.75	3.95	3.30
Potatoes	\$/cwt.	11.00	9.85	8.90	6.55	10.20	12.80	10.30	8.90	8.75	12.90
Sweet Potatoes	\$/cwt.	19.30	11.00	13.00	11.70	13.90	13.50	16.50	12.10	20.50	15.10
Peanuts	ct/lb.	28.5	27.1	29.4	30.5	30.8	32.3	28.8	27.8	29.3	27.7
Oats	\$/bu.	1.25	1.49	1.61	1.90	1.65	1.30	1.85	2.85	1.70	2.05
Wheat	\$/bu.	3.50	3.05	2.42	3.30	2.85	3.25	3.90	4.50	3.20	2.60
Hay	\$/ton	60.00	61.00	48.50	51.00	79.00	47.00	50.00	49.00	47.00	53.00
Peaches	ct/lb.	24.6	23.8	21.3	31.3	32.9	23.5	28.5	50.5	30.2	45.6
Pecans	ct/lb.	47.5	91.2	85.8	120.0	41.9	79.0	84.5	53.1	64.8	87.0
Broilers	ct/lb.	36.0	32.0	30.5	31.0	34.0	34.5	34.0	39.0	38.0	40.0
Eggs 2/	ct/doz.	57.0	60.9	56.1	42.9	44.9	41.6	46.7	62.0	55.9	49.0
Hogs	\$/cwt.	39.70	49.60	45.30	36.90	41.30	35.80	35.80	47.50	48.70	30.40
All Beef Cattle	\$/cwt.	63.20	69.60	76.60	66.80	69.00	63.00	51.40	41.30	57.60	56.00
Steers and Heifers	\$/cwt.	73.20	79.20	83.30	73.30	78.30	71.50	57.80	46.40	67.20	65.20
Calves	\$/cwt.	85.90	90.10	91.90	82.90	88.50	78.20	59.70	49.20	79.10	75.10
Milk Cows	\$/head	1,080	1,150	1,060	1,140	1,140	1,150	1,110	1,090	1,090	1,110
Milk, Wholesale	\$/cwt.	14.90	15.90	13.50	14.50	14.20	14.70	14.00	16.40	14.80	16.50
Sheep	\$/cwt.	N/A	N/A	21	24	22	19	25	28	37	32
Lambs	\$/cwt.	N/A	N/A	50	55	54	50	65	75	85	70
Catfish, Foodsize	ct/lb.	N/A	73	61	58	68	74	72	71	71	68
Honey	ct/lb.	54	55	63	59	59	52	69	87	81	72

1/ Marketing year average prices are weighted prices for crops, livestock, and poultry items sold during the marketing year.

They represent average prices received by farmers at the point of first sale for all grades and qualities of the commodity sold.

2/ Estimates are for market eggs only.

ALABAMA COMMODITY PRICES - A DECADE OF DECLINE 1998 Prices as a Percent of 1989 Prices



Prices received for most commodities sold by Alabama farmers during the 1998 marketing year were below a decade ago. The chart shows 1998 marketing year average prices for major commodities as a percent of prices received 10 years earlier in 1989. However, prices during the period were higher for some commodities: potatoes, oats, peaches, pecans, broilers, milk and honey.