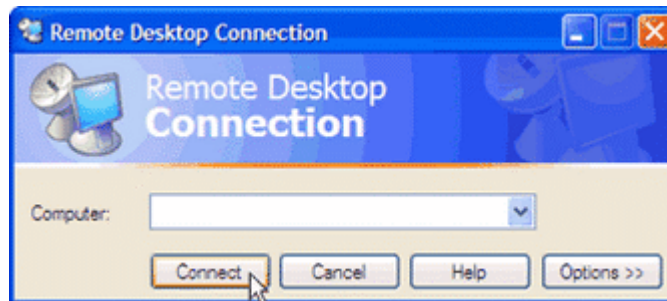


Using XP's Remote Desktop

- A. Open **Remote Desktop Connection**. (Click **Start**, point to **Programs** or **All Programs**, point to **Accessories**, point to **Communications**, and then click **Remote Desktop Connection**.)
- B. In **Computer**, type the computer IP address (ex 131.204.xxx.xxx) or name (ex smithxp-1) of the computer running Windows XP Professional that you wish to access. To find this information point your browser to either <http://www.aces.edu/ctu/techref/networking/ComputerName.pdf> or <http://www.aces.edu/ctu/techref/networking/IPAddress.pdf>



- C. Click **Connect**. The **Log On to Windows** dialog box appears.
- D. In the **Log On to Windows** dialog box, type your user name and password in the appropriate boxes. Make sure the **Log on to** box displays AUBURN and then click **OK**. The Remote Desktop window will open and you will see the desktop settings, files, and programs that are on your office computer. Your office computer will remain locked. Nobody will be able to work at your office computer without a password, nor will anyone see the work you are doing on your office computer remotely.

Note To change your connection settings, (such as screen size, automatic logon information, and performance options), click **Options** before you connect.

To log off and end the session

- A. In the **Remote Desktop Connection** window, click **Start**, and then click **Log Off**. Click **Log Off** again to disconnect.