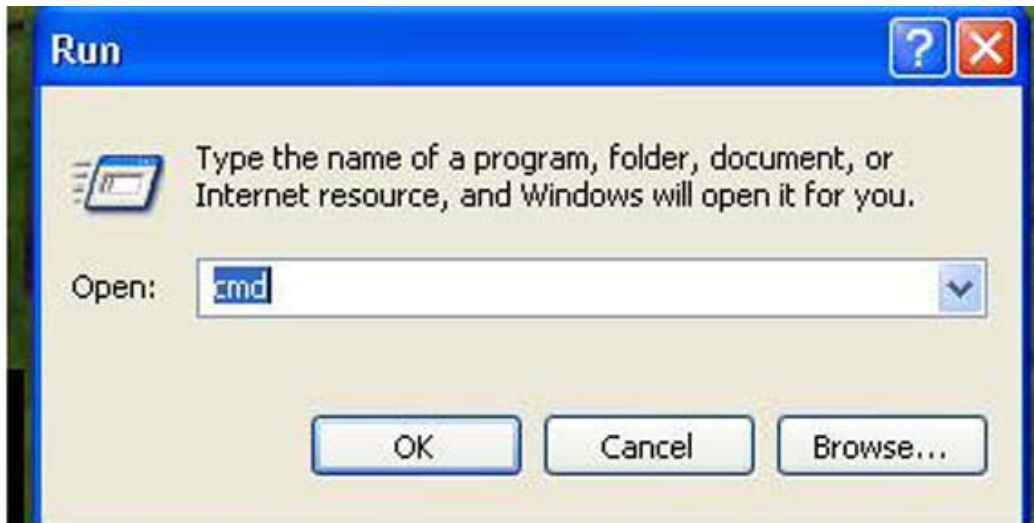
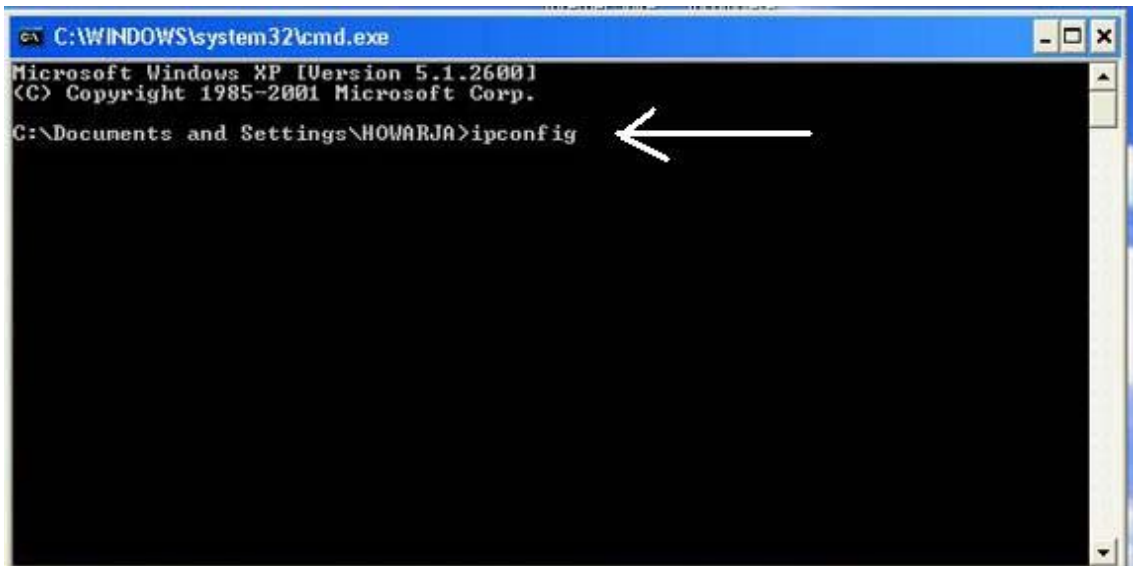


## Identifying Windows XP's IP Address

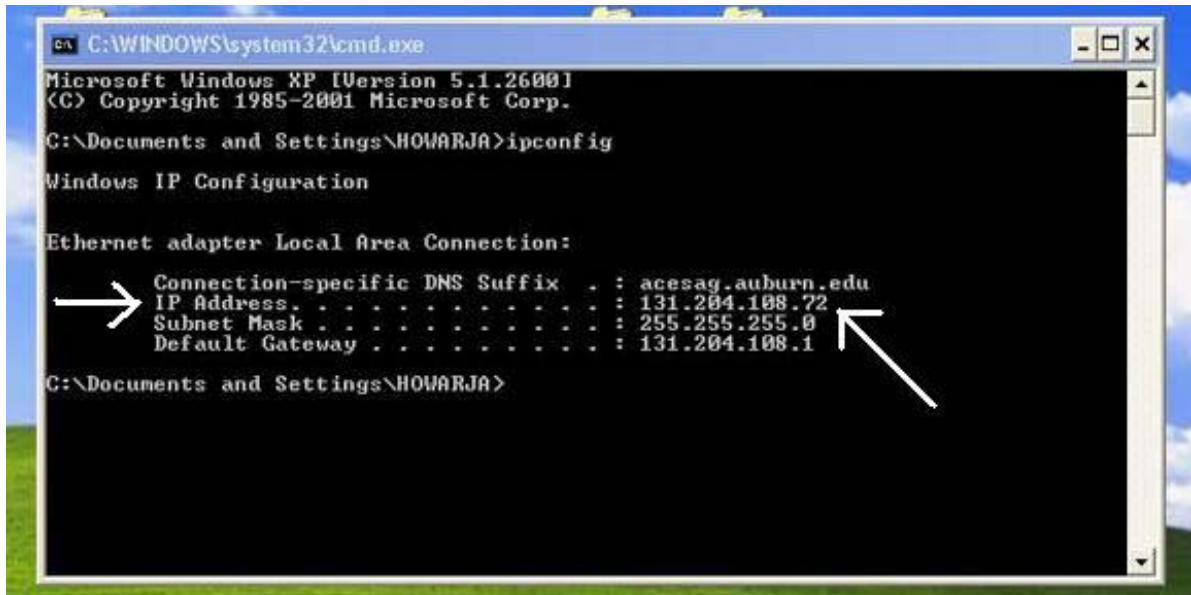
1. Begin by clicking on the “Start” button. Next, click “Run” and type **cmd** in the box labeled “Open.” Click “OK” to continue.



2. A black screen with white writing will appear. There will be a blinking cursor following a row of information similar to: C:\Documents and Settings\HOWARJA>. Type “**ipconfig**” (without the quotes) and press “Enter.”



3. The address will be displayed on a line named IP Address. It is usually located on the second line of information and is presented in this format: 131.204.108.72.



```
C:\WINDOWS\system32\cmd.exe
Microsoft Windows XP [Version 5.1.2600]
(C) Copyright 1985-2001 Microsoft Corp.

C:\Documents and Settings\HOWARJA>ipconfig

Windows IP Configuration

Ethernet adapter Local Area Connection:

    Connection-specific DNS Suffix . : acesag.auburn.edu
    IP Address . . . . . : 131.204.108.72
    Subnet Mask . . . . . : 255.255.255.0
    Default Gateway . . . . . : 131.204.108.1

C:\Documents and Settings\HOWARJA>
```