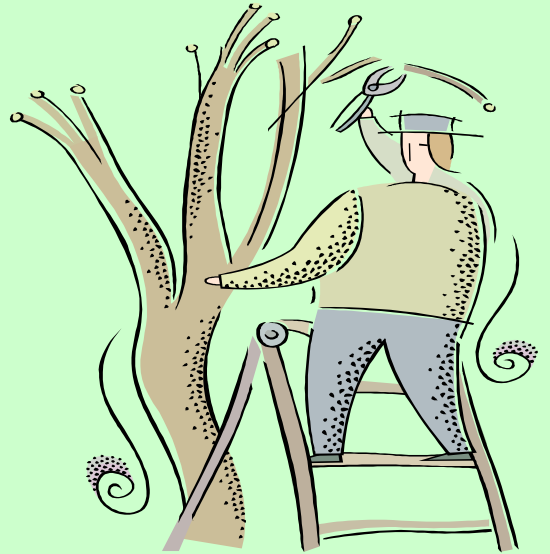


This demonstration is open to any and all individuals with an interest in learning about the care and maintenance of fruit trees

Bring your pruning shears!



Pruning Demonstration for Various Fruit Crops, Roses & Ornamentals

**Hands on Learning
Will address tools and safety aspects of pruning**

**Thursday, February 16, 2012
9:00 a.m. until 1:00**

**At the
Jon Archer Agricultural Ctr.**

**For more information
contact:
(251) 574-8445 or email:
jmiles@aces.edu**

 **ALABAMA COOPERATIVE
Extension
SYSTEM**
Alabama A&M and Auburn Universities