



# MOBILE COUNTY 4-H ANIMAL SCIENCE CLUB NEWS

## INSIDE THIS ISSUE:

<i>Showmanship Division</i>	2
<i>Showmanship Tips</i>	2
<i>Fitting Tips</i>	3
<i>Clipping Tips</i>	3
<i>Parts of the Beef Animal</i>	4
<i>October Club Meetings</i>	5
<i>Cattlemen's Assoc. Raffle</i>	5
<i>Fair Exhibit</i>	5
<i>November Club Meeting</i>	5
<i>Radio Programs</i>	6
<i>Letter from Jane Hartselle</i>	6
<i>Letter to Club Member, Etc.</i>	7

## Dates to Remember:

- Oct. 11—Paint Panels
- Oct. 15—Market Steer Entry Deadline
- Oct. 17-21—Put up Exhibits
- Oct. 18—Alabama National Fair—Equestrian Drill competition
- Oct. 18—Show Rig Prep
- Oct. 23-Nov. 1—Greater Gulf State Fair
- Oct. 23-31—Man Cattlemen's Table at Fair 5:00 pm-8:00 pm
- Oct. 23—Steer Show Weigh-in
- Oct. 24—Steer Show & Sale
- Oct. 26—Livestock Judging 4:00 pm & Hog Showmanship 5:00 pm
- Oct. 31—Heifer Show
- Nov. 2—Take down Exhibits
- Nov. 19—Club Meeting
- Dec. 1—Steer Show Recognition Program

## 4-H & FFA Steer Show & Sale



The 4-H & FFA Steer Show & Sale is almost here. I know everyone is excited and ready.

### WEIGH-IN—October 23

All steers should be in the Fair's cattle barn by 4:30 p.m. We should be through with the Weigh-In no later than 7:00 p.m.

Use the dirt road that runs behind the Fairgrounds off Cody Road.

Fair entry fees of \$10 for one steer or \$12 for two steers are due at the weigh-in.

Bring your Greater Gulf State Fair Livestock Entry form filled out ahead of time.

### STEER SHOW—October 24

Arrive early at the Fair to groom and fit your steer.

🐄 10:00 am—Walk your steer around ring in front of the Rules Committee.

🐄 12:45 pm—Gather in ring for opening pledges and group photo. Wear orange 4-H shirt provided by Mr. Scott Skelton & Double S Farms during the morning and for group photo.

🐄 1:00 pm—Steer Show

🐄 5:00 pm—Hamburger Supper

🐄 6:00 pm—Steer Sale

🐄 **You must stay with your steer for the Re-Sale.**

🐄 Please review Rule #13 of your 2009 Market Steer Show Rules.

🐄 See Rule # 7. You may wear your own shirt during the show.

## Exhibitor's Supply List

### Animal Supplies

Signs  
 Rope / Show Halters  
 Feed / Water Containers  
 Neck Ties (Mandatory)  
 Calf Calm product (if needed)

### Grooming Supplies

Shampoo  
 Combs  
 Scissors  
 WD-40  
 Blower  
 Hair Spray  
 Rags  
 Clippers  
 Brushers (Rice & Wash)  
 Carry Case (Container)  
 Plastic Garbage Bags

Water Hose W/Nozzle  
 Shaving Cream  
 Spray Paint/Shoe Polish  
 E-Z Comb Adhesiv  
 Grooming Chute  
 Leg Adhesive  
 Adhesive Remover  
 Clipper Lubricant

### Other Supplies

Extension Cords  
 Show Stick  
 Wheel Barrow  
 Signs (Calf Name, Farm Name, Etc.)

Shovel  
 Show Box  
 String or Tie Wire

### Personal Supplies

Ice Chest (W / Drinks)  
 Napkins/ Paper Towels  
 Table  
 Wash Cloths / Towels  
 Soap & Shampoo  
 Shoes /Belt  
 Calf Entry Fees  
 Plastic Bag for Dirty Clothes & Towels

Snacks  
 Lawn Chairs  
 Shower Shoes  
 Clothes  
 Brush  
 Money  
 Passes / Tickets

**Fair Rule**—You may only eat and drink in designated areas (behind chain link fence).

## Showmanship Divisions

### LEVEL I – BASIC CATTLE HANDLING:

- ☛ Lead Steer into Show Ring moving as Ring Master instructs you.
- ☛ Begin to set your Steer's feet as soon as you are parked.
- ☛ Watch for instructions from Ring Master or Judge.

### LEVEL II – ADVANCED CATTLE HANDLING:

- ☛ Lead Steer into Show Ring moving as Ring Master instructs you.
- ☛ Begin to set your Steer's feet as soon as you are parked.
- ☛ Watch for instructions from Ring Master or Judge.
- ☛ Be prepared to answer questions about your Steer.

### LEVEL III – ADVANCED CATTLE HANDLING AND FITTING:

- ☛ Lead Steer into Show Ring moving as Ring Master instructs you.
- ☛ Begin to set your Steer's Feet as soon as you are parked.
- ☛ Watch for instructions from Ring Master or Judge.
- ☛ Be prepared to answer questions about your Steer.
- ☛ Be prepared to Fit your Steer.

### FITTING YOUR STEER:

- ☛ Have your Steer clean and dry beforehand.
- ☛ Have your proper Grooming Supplies.
- ☛ Begin Grooming your Steer by brushing.
- ☛ Next you may want to brush in Show Foam over Steer's body.
- ☛ Pull hair up on legs with Scotch Comb and Adhesive.
- ☛ Pull hair up on tail-head put into place with Adhesive and trim with scissors if needed.
- ☛ There will be a time limit on fitting your Steer.



## Showmanship Tips

In Showmanship, you are judged on your abilities to control and present your steer to bring out his best characteristics. Advance planning and hard work are the keys to a good show-person. Training your Steer to walk, stop and set up easily will take time and patience. This is a learning experience. Leave the ring knowing you have given this project your best effort. Learn from your mistakes and improve your skills for the next show.

1. When entering the Show Ring move as the Ring Master instructs you. Keep your Steer's head up, be alert, keep a close eye on your Steer, keep feet set, keep Steer clam with show stick and know where the Judge is located at all times.

\*Do not crowd yourself, leave 3 to 4 feet between  
your Steer and the Steer next to you\*

2. When leading your Steer always exhibit good Showmanship. If the Steer in front of you stops, take the show stick and with the handle end gently tap the Steer in front of you on the rump.
3. Setting your Steer side by side: (*In a straight line.*) Set the feet at all four corners under the animal, each bearing their full share of the animal's weight. (*At this view, the Judge is looking at the rear and front of the Steer.*)
4. Setting your Steer tail to head: (*Profile*) The rear feet should be staggered so the far-side foot is slightly in front of the foot closest to the Judge. The front feet should be set square or staggered. The toe of the front foot on the far-side should be set back half the distance of the foot on the Judge's side. (*At the view, the Judge is looking at the profile of the Steer.*)
5. Use your show stick to keep Steer calm while setting feet and once feet are set. (*Do not saw your Steer with rapid stick movement. Use slow deliberate strokes with the show stick.*)
6. Use show stick to correct top-line: Apply pressure at the navel with hook of show stick if the top-line is weak and needs to be raised. Apply pressure to loin with the hook of show stick if the rump is steep and the loin is high.
7. A scotch comb should be carried in your back pocket (*with teeth toward you*). This is used to fix the hair after the Judge handles your steer.
8. Be prepared to answer questions about your steer. Weight, average daily gain, birth date, breed, parts of the steer, what are the steers weakness and what you would do to correct them, feeding program (*such as what % of protein is in your steer's feed, how many pounds of feed is fed per day and what does the feed consist of?*)

## Fitting Tips (Pre-show Preparation)

### Body Hair

- 🐾 Apply show foam over the entire body (except the legs). Brush it in and blow it dry. The foam holds the hair and brings up the under coat.
- 🐾 Another option is to mist the calf with a show product such as Base Coat, Zoom Bloom, Show Sheen or rag oil to set the hair. When using these products you need time to blow it in using an electric blower for the hair to really pop out. The more you blow the hair, the more volume it gets.
- 🐾 Use light adhesive all over short-haired calves if you remember to wash it out. Longer, better trained hair doesn't need much more than a light oil. The foam and some mists will weigh down the hair.

### Fitting the Legs

Pull the hair up to give the calf an appearance of straighter legs with more bone but making it look natural. The key to a natural appearing fit job is to use as little adhesive as possible while combing frequently to avoid a "gummy" look. The areas at the calf's stifle, forearm and around the tail head need to show a smooth transition from glued to non-glued areas.

The hair below the hocks and knees needs to be pulled up at a 45 degree angle and feathered to the front and back of the leg. When done correctly on the inside and outside there will be a point on the front and back of the legs. This point of hair is what you clip in order to make the calf's legs look straighter. If there is a part in the center of the leg, gently pull the hair at the part straight up with the tip of the comb just enough to cover the line.

- 🐾 Start at the base of the hoof when pulling up leg hair.
- 🐾 Brush the legs everyday at a 45 degree angle to help "loosen" the hair for ease of fitting.
- 🐾 Fit the inside of the legs but only up to the hock or knee.
- 🐾 A good rule of thumb is two quick bursts of leg adhesive and then several strokes with the comb. Keep your comb clean.
- 🐾 Keep the areas to be glued as clean as possible. Many show-day oils break down adhesive.
- 🐾 Keep the spray cans in a cooler. Do not get them too hot or they will explode!! Keep your aerosol cans warm on extremely cold days so that they will spray better.
- 🐾 Center the points on the front and back of the legs or the leg will appear crooked.
- 🐾 The shorter the hair on the legs, the less natural it is going to look pulled up.
- 🐾 Everyone has different styles of fitting., watch a pro.

### Fitting the Tailhead and Tail

Most fitters leave an animal's tail natural—just trimming it. The hair need to extend approximately one inch below the last bone in the tail and then be bobbed off. You can put the tail up using a ratting comb, glue and a tail tie if needed. The completed symmetrical ball needs to be in a position to add balance to the animal. A tail that is too high will make the animal look heavy fronted.

The tailhead needs to be pulled up to a point from both sides. Keep it straight in line with the calf's head and spine. Keep the part level.

## Clipping Tips

The legs need to be clipped to make them appear as straight as possible. Most legs have a natural curve. Clip that curve out. Only if your calf is post legged (too straight) you need to clip a slight curve into the leg. It is important to remember that the more hair you can leave on the leg the bigger boned the calf will look. Don't clip off all the hair you worked so hard to grow. In general, try and make a straight line from the top of the hoof, up the front of the leg, to the rear flank area.

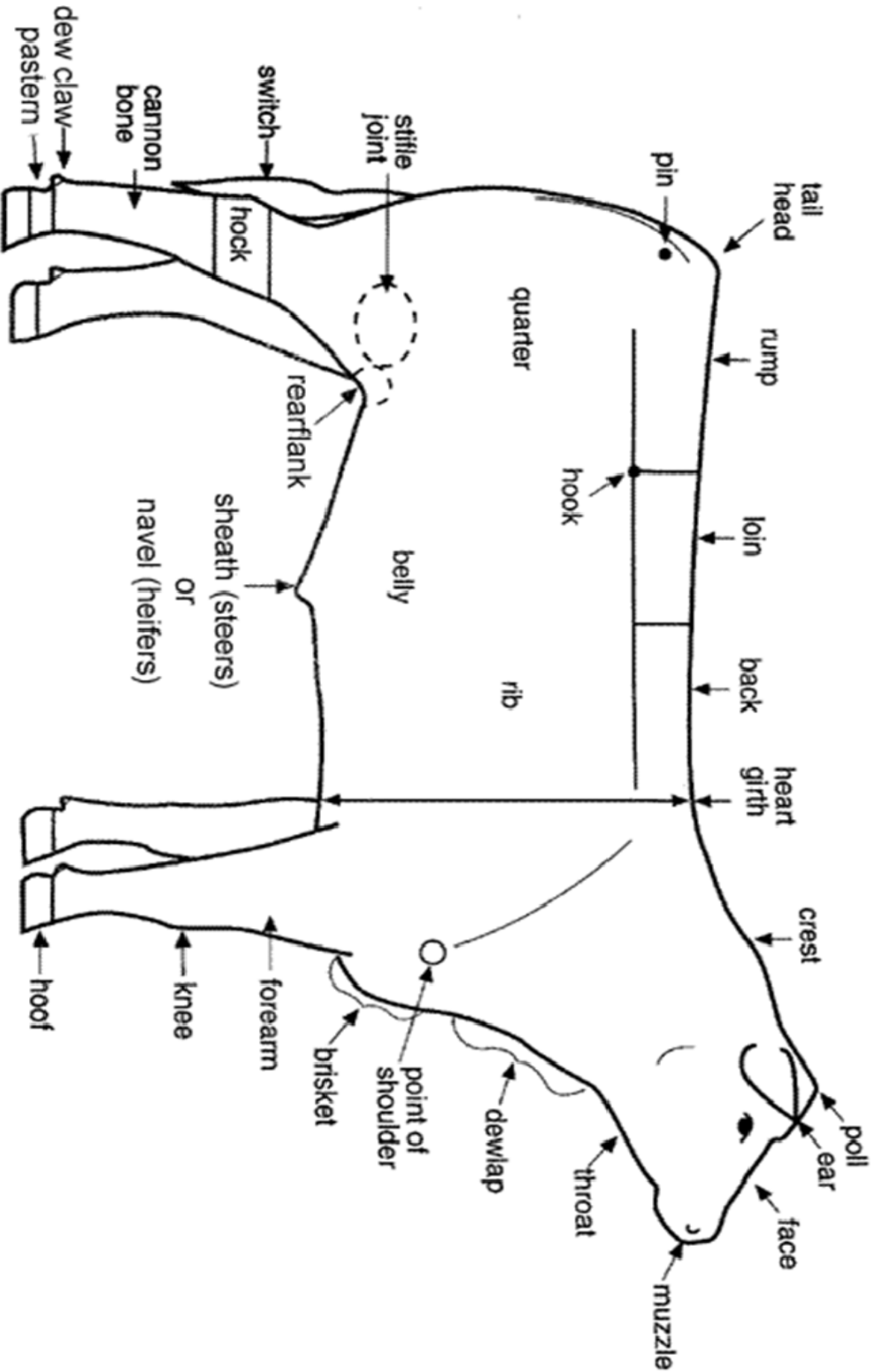
Clipping the Tailhead, Rear Quarter and Rear Legs

Clip the tailhead to give the calf the appearance of a longer square rump. The tailhead hair needs to be a natural extension of the calf's top-line.

- 🐾 Brush the hair out and around the hindquarter to add dimension when viewing the animal from the rear.
- 🐾 Brush hair in this area to fill in the hip to make it appear to be more level from the hooks to pins.
- 🐾 Pull hair up and out and hold in place to add muscularity.
- 🐾 Leave hair longer to add width to the lower quarters.
- 🐾 Leave hair above the hock to reduce hock prominence.
- 🐾 Shave the ball of the hock to the skin in about a three inch long area to reduce hock prominence.
- 🐾 Trim long hairs after boning the leg (pulling the hair up and out) to give the appearance of a straighter leg.
- 🐾 Trim this area beginning right above the hock area to straighten the appearance of the leg.
- 🐾 Trim this area and around the entire leg to give a straight, symmetrical appearance.
- 🐾 Pull the hair on the inside and the outside of the cannon bone slightly forward to help add hair length to the front of the leg.
- 🐾 Clip the loin area on steers and heifers flat on top and all of the hair left on the loin edge.

# Parts of the Beef Animal (Steer)

Study the illustration below to review the parts of a beef animal. Image Copyright, Ohio State University Extension. Used with permission



## OCTOBER CLUB MEETINGS

We will be meeting **October 11, from 1:00 p.m.—5:00 p.m.**, at the Fairgrounds to help the Mobile County Cattlemen's Association and Rhonda Myrick paint the Steer Ring Panels. Bring your supplies to help paint, (rags, rollers, brushes, etc.).

Our next meeting before weigh-in will be a **MANDATORY WORKDAY** at the Fairgrounds, **October 18, from 1:00 p.m.—5:00 p.m.** This is when ALL cattle exhibitors need to help set up the show ring and spread shavings. Bring rakes, shovels, wheelbarrows and tools needed to move shavings. Come prepared to work!

Rhonda Myrick will be handing out Fair Parking Passes on October 18. Be prepared to pay \$10.00 per pass.

Also at this time, exhibitors can claim their stall; so bring tape, markers, posters, etc., to mark your spot.

**REMEMBER RULE #10** OF THE 4-H & FFA MARKET STEER SHOW 2009 RULES : IT IS THE RESPONSIBILITY OF THE EXHIBITO FEED AND KEEP THE ANIMAL AND STALL CLEAN. PREMIUMS AND PRIZE MONEY MAY BE WITHHELD IF STALLS ARE NOT CLEAN WHEN STEERS LEAVE.

All exhibitors **MUST** clean-up their stalls at the Fair. Remove any soiled shavings after the show is over Saturday night! ALL 4-H'ers are responsible for your steer stalls, no matter the outcome of the show. (Remember Sportsmanship.)



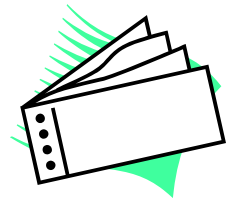
## CATTLEMENS ASSOCIATION RAFFLE

The **deadline to turn in** your Mobile County Cattlemen's Steer Raffle tickets and money is **October 23**. Bring your money and/or tickets when you weigh-in your steers at the Fair.

As you know from our last meeting, the Cattlemen's Association is giving away a belt buckle to the 4-H'er who sells the **MOST** raffle tickets by October 23. This is our only fundraiser, at this time, and the Cattlemen are so generous to donate 1/2 of the money raised to our club; to help pay for trips to Montgomery, Auburn workshops and other Animal Science Educational events for ALL members of our club.

Extra tickets may be picked up at the Extension office from 7:30 a.m.—4:00 p.m., Monday through Friday. You

must sign for them so see Myra or contact Mrs. Christine Dickinson, Secretary of the Mobile County Cattlemen's Association at 866-2425.



If you are a club member but do not exhibit animals, this is the perfect chance for you to volunteer, do your part, and help our 4-H Animal Science Club.

All members need to volunteer to help man the Cattlemen's table during the Fair.

Contact Mrs. Dickinson and sign up to help sell steer raffle tickets at the Fair October 23—October 31, from 5:00 p.m.—8:00 p.m.

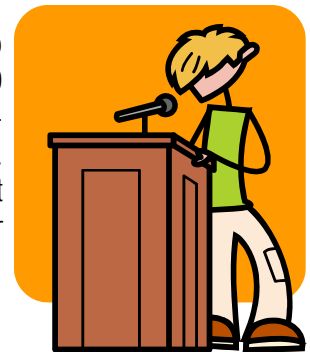
## FAIR EXHIBIT

The following 4-H'ers met with Mrs. Nell Williams and agreed to help with our club 4-H Exhibit in the Farm & Home Building: **Mica, Madison B., Blake, Whitney, Sarah, and Jason**. Bring your supplies and items to set-up the exhibit at 2:00 p.m. October 18.

Exhibit must be completed by 8:00 p.m. October 19.

## NOVEMBER MEETING

The 4-H Animal Science Club will meet November 19 at 6:30 p.m. in the Jon Archer Agricultural Center's small auditorium. Exhibitors who sold a steer at the Fair will practice their speeches to their buyers.



## Radio Programs



We have two chances to be on Radio!

1. October 8, meet at the Jon Archer Agricultural Center at 8:45 p.m. We will do a recording for our weekly radio program.
2. October 20—We will do a live program on Dan & Shelby's Morning Show. Any 4-H member that would like to participate please meet at KSJ Radio Station at the WKRG TV 5 Building on 555 Broadcast Drive. We will gather in the parking lot 7:45 a.m. Wear last year's green show shirt if you have one.

Call Myra at 574-8445, from 7:30 am—4:00 pm, if you plan to participate so she can type an excuse note for your school.

## 4-H Fair Exhibits

Dear 4-H'er or 4-H Volunteer:

The Greater Gulf State Fair is just around the corner! The Greater Gulf State Fair begins on October 23 and runs through November 1, 2009.

4-H'ers please visit [www.mobilefair.com](http://www.mobilefair.com) , click on premium book, scroll down to 4-H to find out about 4-H contests that you may enter, along with the rules and regulations for the contests. Please read the rules and regulations carefully and follow those rules for the contests you choose to enter. **You must be a 4-H member in order to enter 4-H Contests at the Greater Gulf State Fair. If you are not a member, please contact Myra @ 251.574.8445 and ask for a 4-H Enrollment Form. All 4-H'ers MUST complete a 4-H enrollment form each year.**

4-H Registration at the Greater Gulf State Fair is as follows:

October 17, 2009 1:00 p.m.-6:00 p.m.

October 18, 2009 1:00 p.m.-6:00 p.m.

October 19, 2009 9:00 a.m.-8:00 p.m.

**ENTRY DEADLINE: MONDAY, OCTOBER 19<sup>TH</sup> AT 8:00 PM**

When you register at the Greater Gulf State Fair, for 4-H competitions or contests, you will receive a 4-H card that allows you to enter the fair and to ride for **FREE ON WEDNESDAY, OCTOBER 28, 2009 FROM 4:00 P.M.-8:00 P.M.** This card is for 4-H Members **ONLY!**

Please feel free to contact me @ 251.574.8445 with any questions or concerns.

Thank you,

*Jane J. Hartselle*

Jane Hartselle  
Regional Extension Agent, 4H & Youth Development





# 4-H—Making the Best, Better!



TO: 4-H Animal Science Club Members, Parents & Volunteers

FROM: Maranda Marks, County Extension Agent Assistant

*Maranda J. Marko*

This is your LAST Newsletter before the Fair. Please post this on your refrigerator and refer to it often, as it contains VERY IMPORTANT INFORMATION. Parents, read this with your 4-H'er.

Thank you to all the new and old members who turned out for our hands-on workshop at the Evans' Farm in Wilmer on Saturday, September 26.

Mr. Scott Skelton, Sarah and Ellis Paul, shared with the group of approximately 23 people, great showmanship tips and ideas.

A great big "Thank You!" to the Evans' families for ALL the hard work you did making your barns ready for the workshop and "State" weigh-in.

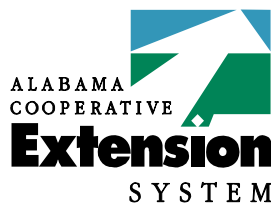


We appreciate Mr. & Mrs. Robley Evans, Mr. & Mrs. Greg Evans, Mr. & Mrs. Kevin Holland, Jacob, Taylor and Abbie for opening your barns and farm to our club.

If you do not have a steer to weigh-in but want to participate in Showmanship you must let us know no later than October 23. You have to fill out the Fair Entry Form to be eligible to participate in a Fair event. You may complete and turn in at the Weigh-In on October 23, from 4:30 p.m. through 7:00 p.m.



We have a busy month ahead of us and I look forward to seeing you soon.



*Alabama A&M and  
Auburn Universities*