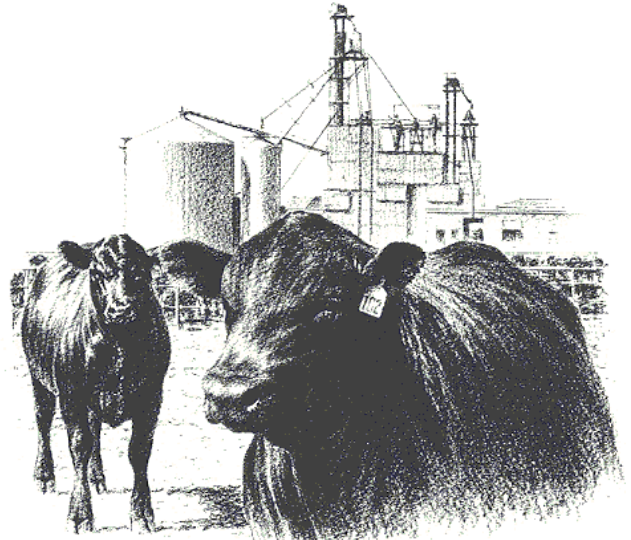




*Your Experts for Life*

LAUDERDALE COUNTY OFFICE  
802 Veterans Drive  
Florence, AL 35630  
Telephone: (256) 766-6223  
Fax: (256) 718-2049



***February 2008***

***Pasture Renovation Workshop***

All livestock producers are invited to a pasture renovation workshop to be at the County Extension office on Saturday, February 23 from 1:00 to 4:00 P.M. We will discuss pasture reestablishment, renovation, fertilization, soil testing, planting options, etc. For more information call me or Robert Spencer at 766-6223.

***Drought Assistance***

According to Roger Wilson at the FSA office they are still taking applications for the drought assistance program. They have also extended it to include 2007, therefore if you received payment but had more cows as of January 2007 then the previous two years then you need to check with his office. According to the information he shared with me there have only been just over 300 producers to sign up thus far. That means less than half of the county producers have enrolled. Contact the FSA office at 764-5833.

***Ag Census***

I have completed my Ag Census have you? The Ag Census is very important and is used in many ways to determine needs and resources. I encourage you to take the time to complete this important survey.

***Cow Numbers***

According to Cattle Fax, cow slaughter in the Southeast is up 19 percent compared to 2006. Until there is an end to this drought this trend should continue.

***Pet Food***

As beef producers search for cheap feeds make sure you do not use pet food as a source of feed for cattle. Many pet foods contain ruminant byproducts and feeding ruminant byproducts back to ruminants has been prohibited since 1997 as a means of preventing the spread of BSE. If any ruminant byproducts are listed on the label, do not feed it to cattle.

***Soil Testing***

With the price of fertilizer, you have no choice but to soil test. No one can afford to put fertilizer out that they don't need. Now is an excellent time to get those samples sent in. Remember Don't Guess, Soil Test! Our office has the boxes and supplies. Also, check your restricted pesticide permit and if you need to renew it now is the time to stop by my office and pickup the packet and make your application. Remember it take about 2 weeks to receive your number.



ALABAMA A&M AND AUBURN UNIVERSITIES, AND TUSKEGEE UNIVERSITY, COUNTY GOVERNING BODIES AND USDA COOPERATING

The Alabama Cooperative Extension System offers educational programs, materials, and equal opportunity employment to all people without regard to race, color, national origin, religion, sex, age, veteran status, or disability.



### ***Cow Sales Due To Drought***

If you sold cows due to the drought in 2007 then be sure you check out the tax benefits outlined in the enclosed information sheet. You have up to four years to replace breeding stock sold due to drought rather than the normal two years because the state was designated a federal disaster.

### ***Breeding Season***

The length of the breeding season has a definite affect on costs and the number of pounds weaned per calf. Oklahoma State University analyzed data from 394 ranches in three states and determined that for each day the breeding season is lengthened, the annual cost of producing 100 pounds of weaned calf increased by 4.7 cents. At the same time the pounds of calf weaned per cow per year decreased by .158 pounds.

Producers who kept their bulls with the cows year-round has \$13.63 greater costs per hundredweight of weaned calf than producers who used a 75- day breeding season. In addition, those same producers, on average, sold 45.82 fewer pounds of calf per cow per year.

### ***Beef Production per Cow***

There has been a big increase in beef production per cow in the last 41 years. In 1965, we produced 363 pounds of beef per cow and in 2006, it was 620 pounds. That is a 70 percent increase in 41 years. Some other years and the amount of production include: 1975, 435lbs.; 1985, 480lbs., and 1995, 565 lbs.

### **Number Of Cattle For Safe Loading In A Truck**

<b>Floor Length (Ft.)</b>	<b>Average Weight of Cattle, Lbs.</b>					
	<b>450 (No.)</b>	<b>600 (No.)</b>	<b>800 (No.)</b>	<b>1000 (No.)</b>	<b>1200 (No.)</b>	<b>1400 (No.)</b>
<b>8</b>	<b>8</b>	<b>7</b>	<b>5</b>	<b>4</b>	<b>4</b>	<b>3</b>
<b>12</b>	<b>13</b>	<b>10</b>	<b>8</b>	<b>7</b>	<b>6</b>	<b>5</b>
<b>18</b>	<b>20</b>	<b>16</b>	<b>13</b>	<b>11</b>	<b>9</b>	<b>8</b>
<b>24</b>	<b>27</b>	<b>22</b>	<b>17</b>	<b>15</b>	<b>13</b>	<b>11</b>
<b>30</b>	<b>34</b>	<b>27</b>	<b>22</b>	<b>19</b>	<b>16</b>	<b>14</b>
<b>42</b>	<b>48</b>	<b>39</b>	<b>31</b>	<b>28</b>	<b>22</b>	<b>20</b>

Check out our website at <http://www.aces.edu/lauderdale>, here you can find previous Beef Newsletters and other information. If you wish to no longer receive Beef Newsletter mailouts please contact us at 766-6223 and ask to be removed.

Sincerely,

Randall Armstrong  
County Extension Coordinator

Attachments:

**The Cost of N Fertilizer** - <http://www.aces.edu/timelyinfo/Ag%20Soil/2008/January/S-01-08.pdf>

**Drought Sales of Livestock** - [http://www.aces.edu/timelyinfo/Ag&NatResEcon/2007/July/daers\\_07\\_07.pdf](http://www.aces.edu/timelyinfo/Ag&NatResEcon/2007/July/daers_07_07.pdf)

**Tips On Reducing Hay Feeding Costs** -

[http://www.aces.edu/timelyinfo/Ag&NatResEcon/2007/December/DAERS\\_07\\_16.pdf](http://www.aces.edu/timelyinfo/Ag&NatResEcon/2007/December/DAERS_07_16.pdf)