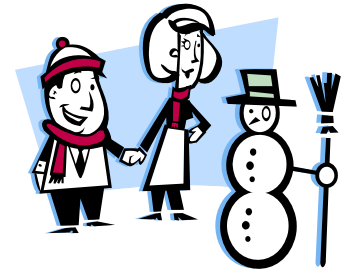


Calhoun County Clover January 2010



The next County Council meeting will be held on February 2nd at 5:30 pm in the Extension Auditorium.

Any 4-H'er that attends all County Council meetings will have eligible for to have field trip fees covered in the spring.

County Contest for Chef 4-H, Arbor Day Poster, Environmental Poster, & Wood U Build It will be on Tuesday, January 12th at 5:30 pm in the Extension Auditorium. Chef 4-H participants need to be there 15 minutes early to set up.

4-H Camp will be held Wednesday, June 16th through Friday, June 18th @ the 4-H Center in Columbia. Applications will be taken in February.

Tiffany Moore, 4H County Agent

Alabama Cooperative Extension System

1702 Noble Street, Suite 108, Anniston

(256) 237-1621

mooretn@auburn.edu

* COUNTY COUNCIL OFFICERS *
* President: Joshua Bridges, Calhoun County Clovers *
* Vice President: Sarah Swain, Calhoun County Clovers *
* Secretary: Jillian Bridges, Calhoun County Clovers *
* Reporter: Rachel Sarro, Calhoun County Clovers *

CONGRATULATIONS TO OUR COUNTY CHICKEN QUE WINNERS:

Juniors:

1st Place: Lena Ring, Wellborn Elementary, 5th
2nd Place: Abby Epperson, Pleasant Valley Elementary, 6th
3rd Place: Brooke Vaughn, Saks Middle, 6th
Participation: Samuel Castillo, Saks Middle, 6th
Timothy Gray, Ohatchee Elementary, 4th

Seniors:

1st Place: Rachel Sarro, Calhoun County Clovers
2nd Place: Davey Mann, Calhoun County Homeschool



Club Meeting Handout

Meeting Date: _____

Program: **Eat this, not that.**

Inspirational Quote: "One cannot think well, love well, sleep well, if one has not dined well." *Virginia Woolf, author*

LOCAL CONTEST RULES

Sewing

1. Garment choices to make are:
 - a. **Vest**
 - b. **Apron**
 - c. **Pants, shorts, or skirts**
 - d. **Clothing Accessories: purse, tote bag, scarves, belt, etc**
 - e. Make the garment yourself using a pattern. You can get help if needed.
 - f. Garment will be judged on:
 - g. straight, neat stitching
 - h. clean, well-pressed appearance
 - i. fit of the garment
 - j. **Do not** wear the garment to school.
 - k. Be ready to try on the garment, **it must be your size.**
 - l. Label the garment with your name, grade, age, school, and homeroom.
- 1st and 2nd place winners are eligible in each category for the county contest



Block Rock

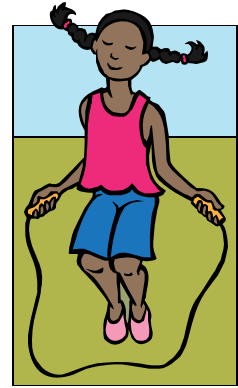
1. Your art must be made from Lego's[®] or other toy blocks.
2. It can't be any wider than 12 inches x 15 inches.
3. It can't be any taller than 16 inches.
4. Your art will be placed on a table. It can be seen from all sides.
5. Carry it on a firm, flat surface like foam board or plywood. Think about ways to keep it from coming apart.
6. Your name, grade, homeroom/period, & school should be on piece of paper that is lightly taped to your art.
7. You must do all the work yourself.
8. 1st place winners are eligible for the county contest.

LOCAL CONTEST RULES

(continued)

Freestyle Showcase

1. Your entry can be large or small. It should be no larger than 3 feet.
2. No live animals. No endangered or threatened plants.
3. Your work must be original. **Do not** use copyrighted images.
4. Be safe in preparing your entry.
5. You must bring any other equipment.
6. Your entry must be new during the current 4-H year. Don't use last year's project from another contest.
7. Write a short description on your topic. Your topic may be a hobby, your favorite animal, a special vacation, your favorite sport, or about something you collect.
8. 1st place winners are eligible for the county contest.



Handicrafts

1. The craft must be made by the 4-H'er who enters it. You can get help if needed.
2. Each category may be entered only **once**. Categories are:

Wood crafts- items may be carved, wood burned, decorated, glued, or other techniques

Needlecrafts- crocheted, knitted, sewed, cross stitched, hooked, etc.

Pillow craft- items must be sewn and stuffed by the 4-H'er.

*Example: pillow or stuffed animal. **NO** quilts, please.*

4. Entries must be labeled with student's name, grade, school, and homeroom.
5. Crafts will be judged on: neatness, originality, quality of work, and completeness.
6. Local 1st place winner in each category are eligible for the county contest.

Extreme Birdhouse

1. It can't be any larger than 18 inches x 18 inches x 18 inches.
2. Create something original. Do all the work yourself.
3. Don't use a kit or a birdhouse that is already built.
4. Label with name, grade, homeroom/period, & school.
5. 1st place winners are eligible for the county contest.



COUNTY CONTEST RULES

Handicrafts, Extreme Birdhouse, and Block Rock!

1. Follow the rules of the local contest. All entries must be turned in to the Extension Office by **Monday, March 15th, at 4:30pm.**
2. 1st place winners are eligible for County Contests.
3. All items must be labeled with your first and last name, school, grade, age and homeroom teacher (on the back).
4. Awards Program will be held on **Thursday, March 18th**, at the Extension Auditorium, beginning at **5:30pm.**

Sewing

1. All clothing garments must be turned into the Extension Office by **4:30pm, on Monday, March 15th.**
2. **1st and 2nd place** winners in each category are eligible for the County Contest.
3. The Awards Program will be held on **Thursday, March 18th, 5:30pm**, at the Extension Auditorium. *You need to arrive 10 min early to practice modeling your garment.*

Did you know...

January is:

**National Blood Donor Month
National Braille Literacy Month
National Hobby Month
Hot Tea Month
National Oatmeal Month
National Soup Month
National Thank You Month
National Eye Care Month**