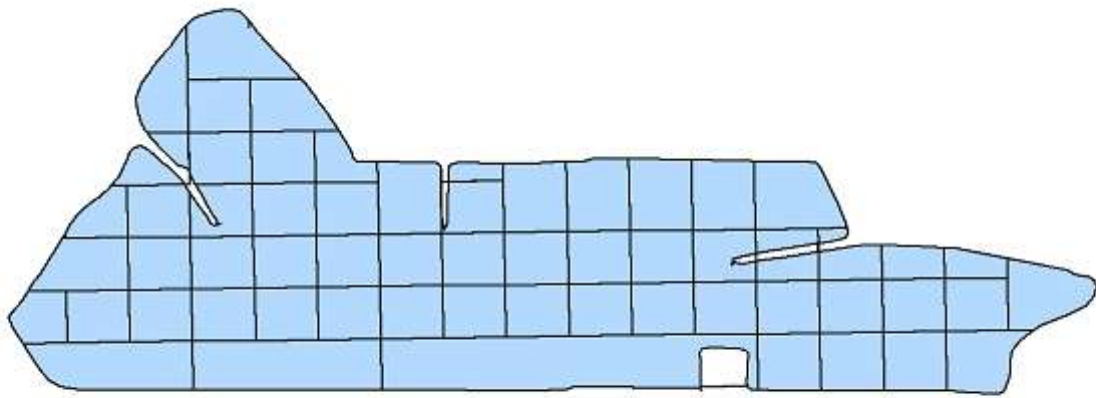


Soil Sampling Map

EXAMPLE



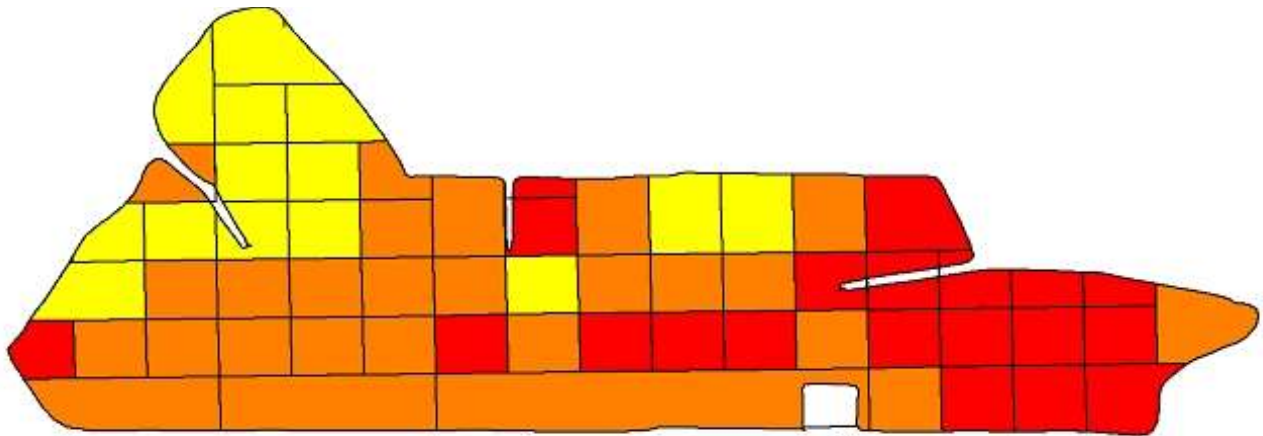
0 480ft

1
N

Field : Nematode Project
Year : 2007
Operation : Generic
Crop / Product : NO PRODUCT
Op. Instance : Instance - 1
Area : 137.82 ac
Length : 81,442 ft
Count : 57

Soil Test Map

EXAMPLE



0 400ft

↑
N

Field : Nematode Project

Year : 2007

Area : 137.82 ac

Length : 81,442 ft

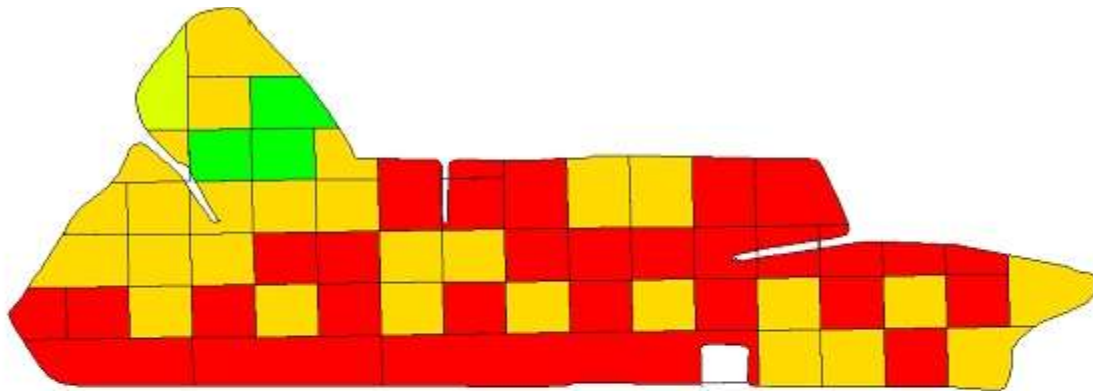
Operation - Name : Generic

Soil K (lbs/A)

■	160.00 - 217.00
■	120.00 - 160.00
■	60.00 - 120.00
■	0.00 - 60.00

Fertilizer Prescription Map

EXAMPLE



0 480ft

Field : Nematode Project
Year : 2007
Operation : Fertilizing Prescription (Dry)
Crop / Product : K
Area : 137.82 ac
Total Amount : 2,780.2 lb
Average Rate : 20.17 lb/ac
Minimum Rate : 0.00 lb/ac

Target Rate(Mass) (lb/ac)

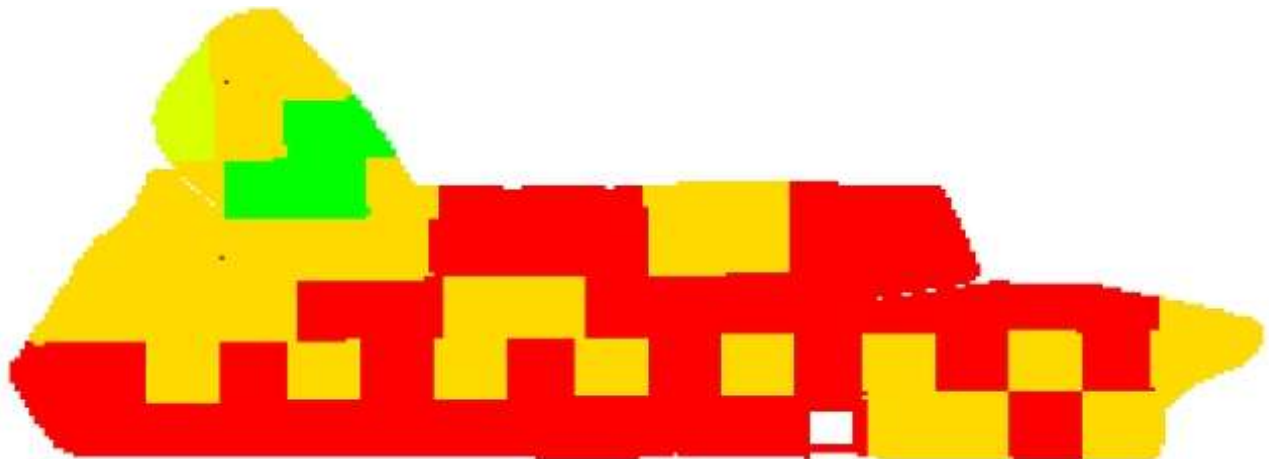
■	60.00 (7.31 ac)
■	50.00 (2.71 ac)
■	40.00 (67.64 ac)
■	0.00 (84.91 ac)

↑
N

Fertilizer Application Map

(As-Applied Map)

EXAMPLE



0 400ft

1
N

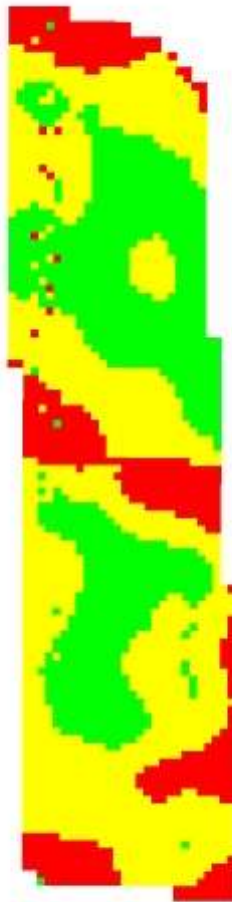
Field : Nematode Project
Year : 2007
Crop / Product : K
Area : 137.82 ac
Total Amount : 2,780.2 lb
Average Rate : 20.17 lb/ac
Minimum Rate : 0.00 lb/ac
Maximum Rate : 60.00 lb/ac

Target Rate(Mass)
(lb/ac)

60.00	(7.59 ac)
50.00	(2.92 ac)
40.00	(72.18 ac)
0.00	(88.81 ac)

Spray Prescription Map

EXAMPLE



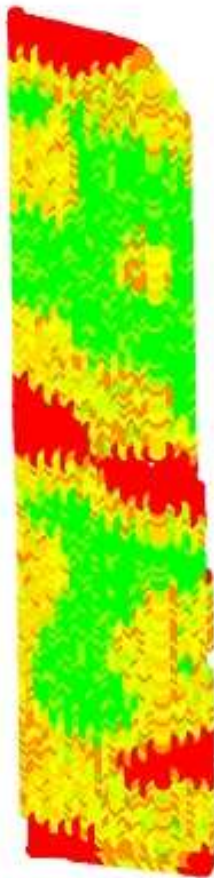
Target Rate(Liquid) (gal(US)/ac)

39.00	(14.68 ac)
34.02	(21.48 ac)
28.00	(7.22 ac)

Field : BAL PE
Year : 2006
Operation : Spraying Prescription
Crop / Product : NITRATE 32%
Op. Instance : Instance - 1
Area : 43.36 ac
Total Amount : 1,504.5 gal(US)
Avg. Rate : 34.70 gal(US)/ac

Spray As-Applied Map

EXAMPLE



Rate Applied(Liquid vol)
(gal(US)/ac)

■	38.79 - 66.44	(10.512 ac)
■	33.94 - 38.79	(4.498 ac)
■	33.93 - 33.94	(4.462 ac)
■	33.92 - 33.93	(3.735 ac)
■	33.90 - 33.92	(4.808 ac)
■	30.91 - 33.90	(4.323 ac)
■	26.45 - 30.91	(4.536 ac)

Field : BAL PE

Year : 2006

Operation : Spraying

Crop / Product : PRODUCT 1

Op. Instance : Spraying - 1

Area : 36.85 ac

Est. Amount : 1,295.9 gal(US)

Avg. Rate : 35.17 gal(US)/ac

Start Date : 4/29/2006

End Date : 5/2/2006

Avg. Productivity : 15.87 ac/hr