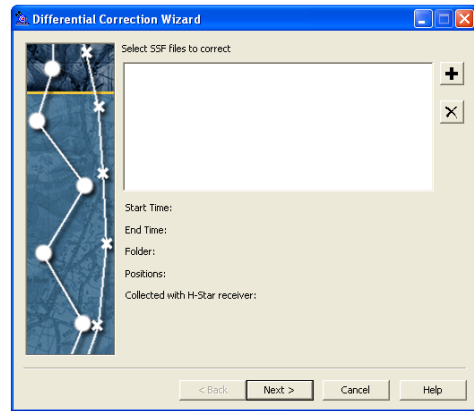
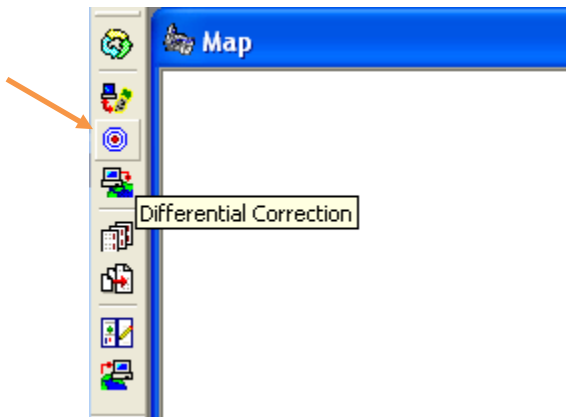
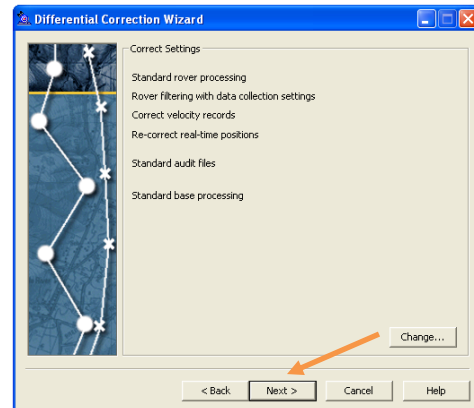
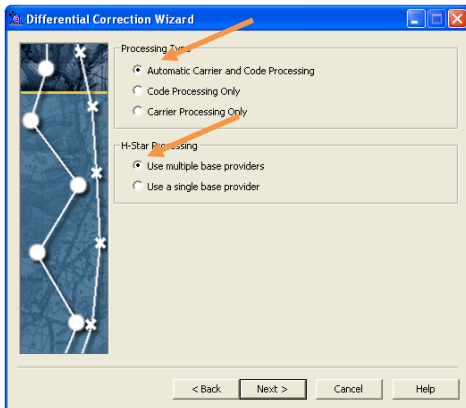


**PROCEDURE FOR DIFFERENTIALLY CORRECTING DATA USING AN XH**

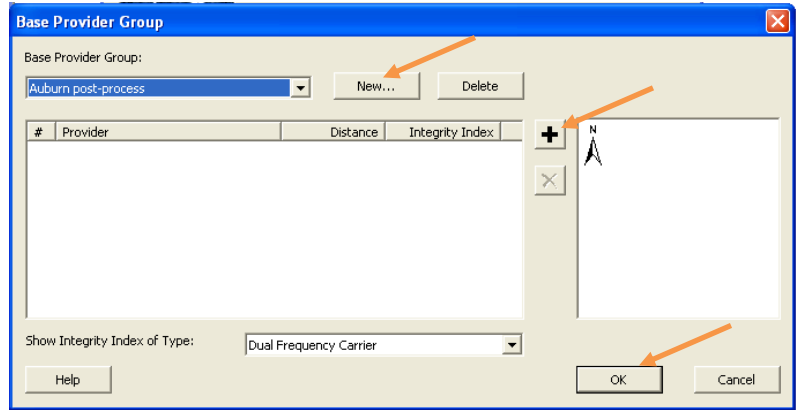
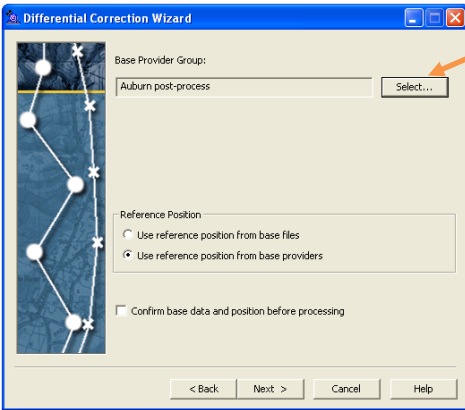
1. Open GPS Pathfinder Office
2. Click on the **Differential Correction Wizard** (bullseye) icon on the left of the screen.
3. Click the plus sign on the right of the Differential Correction Wizard screen and navigate to the folder containing the file you wish to correct, select it and Open, click **Next**.



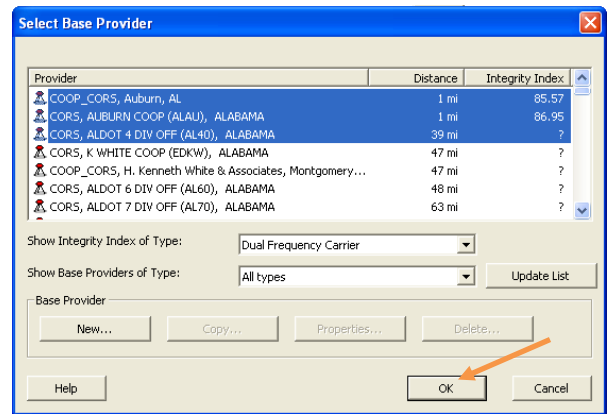
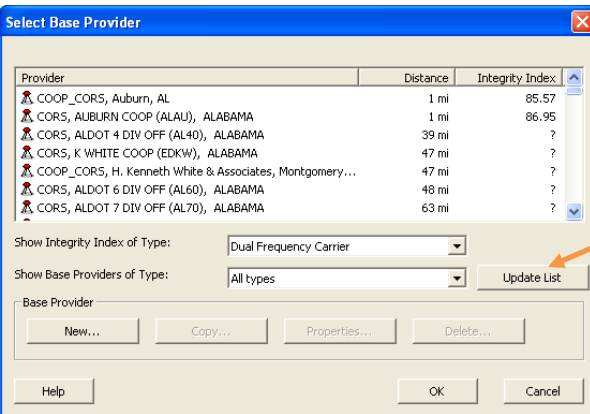
4. Choose **Automatic Carrier and Code Processing** and **Use multiple base providers**, click **Next**.
5. Click **Next**.



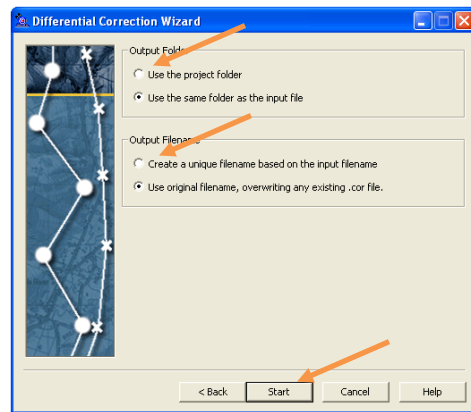
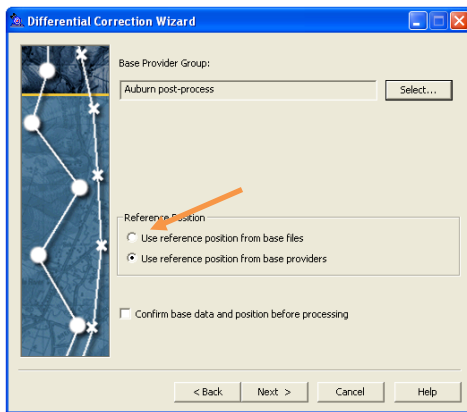
*There are several ways to differentially correct your data. The preferred way is to let the Wizard extract the base data files for you (described below). If this fails, see the Troubleshooting section at the end to manually obtain a file for differential correction.*



6. Click **Select** to the right of **Base Provider Group**.
7. Select **New** and name the **Base Provider Group**.
8. Select **Dual Frequency Carrier**, **Single Frequency Carrier**, or **Code** (whichever applies to the data collected...ask if you don't know).

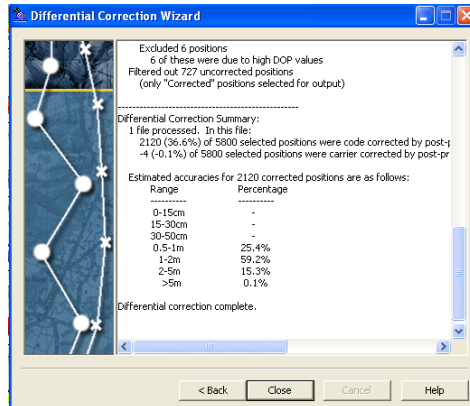


9. Click the plus sign to the right of the screen. Click **Update List**.
10. Hold down the Shift key and select at least three base stations within a 20 mile radius. (If there are none select the ones that are closest). *If you have trouble getting this base station to work, repeat steps 2 – 8 choosing different stations.* Click **OK**. Click **OK**.
11. Ensure the circle is checked next to **Use reference positions from base providers** and click **Next**.
12. Click the circle next to the appropriate **Output Folder** and **Output Filename** and click **Start**.



13. Allow the Wizard to process the data.

14. When completed, you should see the percentages of data features that fell into certain corrected intervals. click **Close**.



15. To view the corrected file select the Open folder icon at the top of the screen and your corrected file should be in the list. It will be the one with the bullseye icon next to the file name.

## TROUBLE SHOOTING: OBTAINING A BASE FILE MANUALLY

*It is always best to wait 24 hours from the time of data collection before attempting to post process. If 24 hours has not passed since you collected data, this may be your problem. Please try again after the allotted time period.*

*If all else fails, downloading the base file manually may be the best option. Please follow these procedures.*

1. Navigate to this URL <http://www.ngs.noaa.gov/CORS/>.
2. Click the **User Friendly CORS** tab in the center of the screen.
3. Fill out the appropriate information about the **data collection** and click **CONTINUE**.
4. From the top, select the appropriate CORS station, leave the other boxes as they defaulted, but ensure the last is **pkzip**. Click **SUBMIT**.
5. After a few seconds, you will have the option to save the file. Save the file and extract it.
6. Follow the steps in the XH section except use the following steps instead of 4 – 11.
7. Under **H-Star Processing** select **Use a single base provider**, click **Next**, click **Next**.
8. Select the circle next to **Browse** and select **Browse** to the right.
9. Navigate to the Desktop and find the file that was just extracted, select the one with an "o" extension.
10. Under **Reference Position** select **Use reference position from base files** and click **Next**.