

# Garmin Colorado Set-up

Shannon Huber Norwood  
Multi-County Extension Agent





Rock 'n  
Roller. Rolls  
to left and  
right. Center  
button is like  
an enter key.

Soft keys.

**Front view of Colorado**



Battery cover.. Lift tab at bottom and pull down to remove.

**Back view of Colorado**



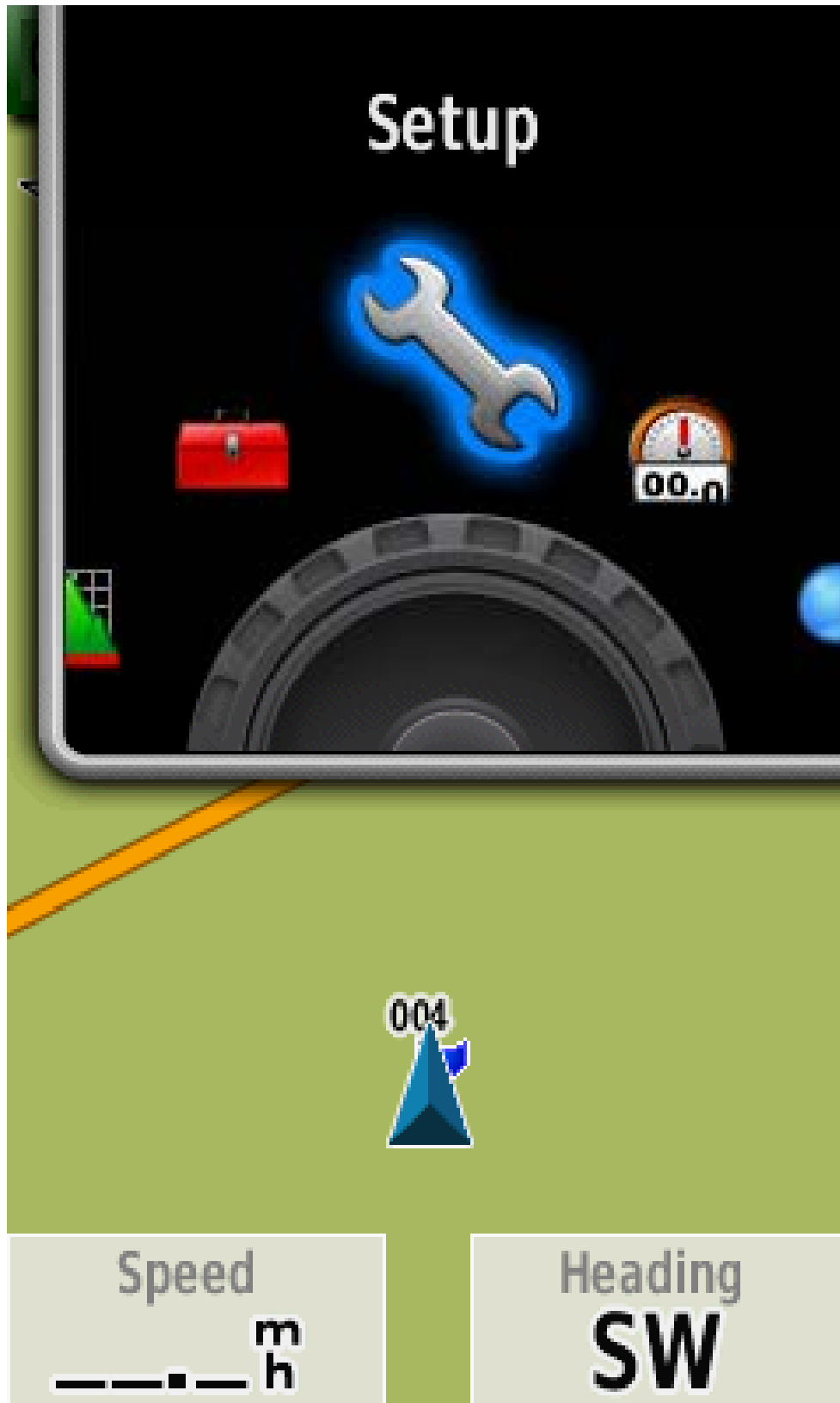
Power

For external GPS.



Insert cable that connects to USB port.

**Top view of Colorado**



## Setup

Use the Rock 'n Roller to get to the set-up icon. Then press enter (center of Rock 'n Roller).

## Shortcuts



System



Display



Shortcuts



Profile Change



Map



Tracks

### Setup

This is the set-up menu. First, select 'System' by highlighting it (using the Rock 'n Roller if it is not already highlighted) and then pressing enter.

**Options**

**Back**

**GPS**

**WAAS**

**Language**

**American English**

**Tones**

**On**

**Serial Interface**

**Garmin Serial**

**Battery Type**

**Alkaline**

## **Setup**

Make sure that WAAS is selected. If 'WAAS' does not appear under 'GPS,' press enter when 'GPS' is highlighted.

Back

Normal

**WAAS**

Demo Mode

## Setup

Use the Rock 'n Roller to highlight 'WAAS' and press enter.

Options

Back

Position Format

hddd°mm.mmm'

Map Datum

None

Map Spheroid

WGS 84

Setup

Back

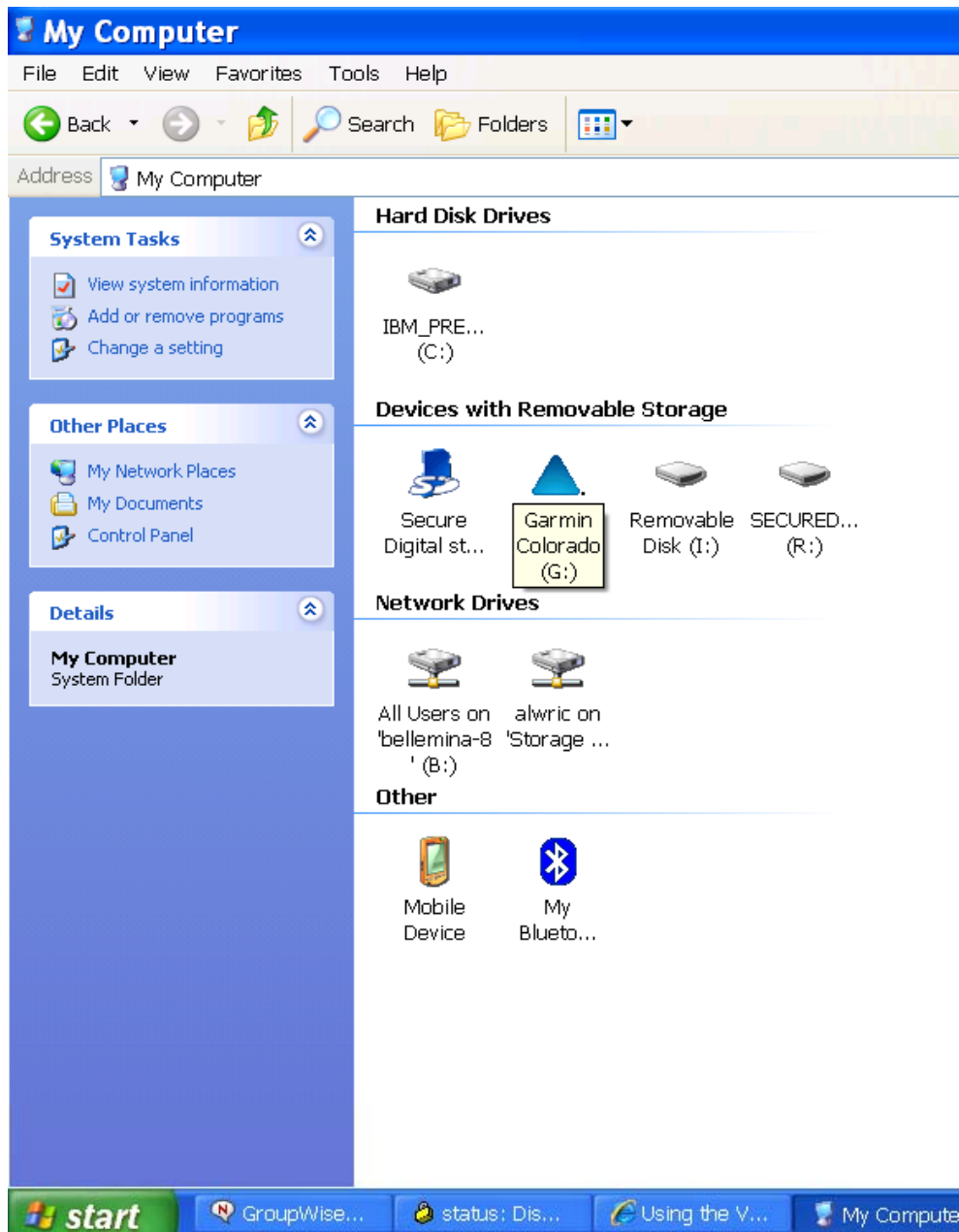
Which Sensor Would  
You Like To Calibrate?

Compass

Altimeter

**Calibrate Compass.**

You must be outside to calibrate the Compass.



## Connecting Colorado to your laptop.

First, the Trip and Waypoint Manager software must be installed on your laptop. Insert the CD and follow the on-screen directions for installation. Once the program is installed, use the USB cable to connect the Garmin to your laptop. Once connected, you will see the Garmin Colorado icon appear on the 'My Computer' screen.



Sun and Moon



Hunt & Fish



Waypoint Manager



Route Planner



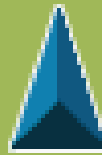
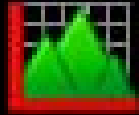
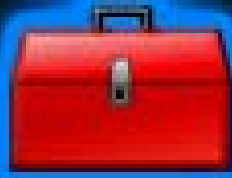
Active Route



Area Calculation

Area Calculation

# Others



Speed  
**1.8<sup>m</sup><sub>h</sub>**

Heading  
**S**



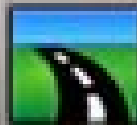
Sun and Moon



Hunt & Fish



Waypoint Manager



Route Planner



Active Route



Area Calculation

Options

Shortcuts

Press start and walk around the perimeter of the area you want to calculate.

Start

Enter name

NOV - 24 - 200

